

SERIES 200 DOUBLE HUNG WINDOW

TEST SIZE W x H	AAMA RATING	AIR INFILTRATION	DESIGN PRESSURE	WATER RESISTANCE	U-VALUE	SHGC	VT
39.5" x 63"	R-PG50	≤0.30 cfm/ft ²	50 psf	7.5 psf	0.17-0.45	0.16-0.58	0.30-0.61



TABLE OF CONTENT

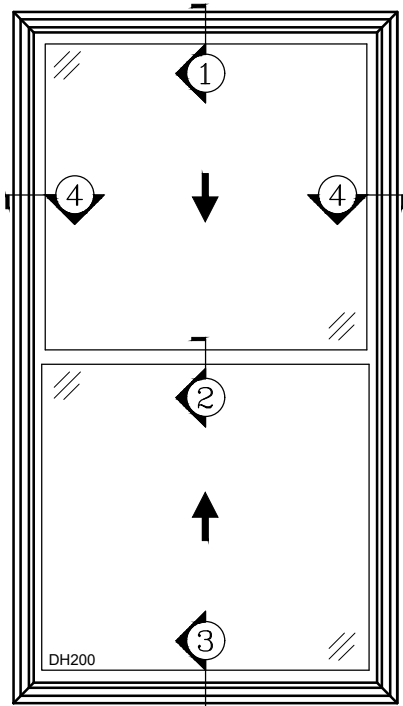
- INTRODUCTION -P1
- SECTION DETAILS -P2
- MULLION -P3-P4
- ACCESSORIES -P5

FEATURES

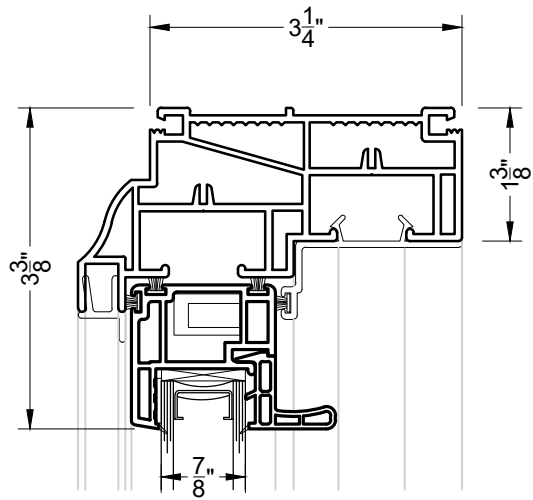
- 3-1/4" FRAME DEPTH
- 7/8" INSULATED GLASS
- SINGLE STRENGTH GLASS
- MEETING RAIL LOCK
- DUAL VENT LOCK
- TILT SASH WITH TILT LATCH
- CONTINUOUS LIFT HANDLE ON BOTTOM SASH
- SLOPED SILL
- CONSTANT FORCE COIL BALANCE
- JAMB ADJUSTER
- DOUBLE-SEAL WEATHERSTRIPPING

OPTIONAL SELECTIONS

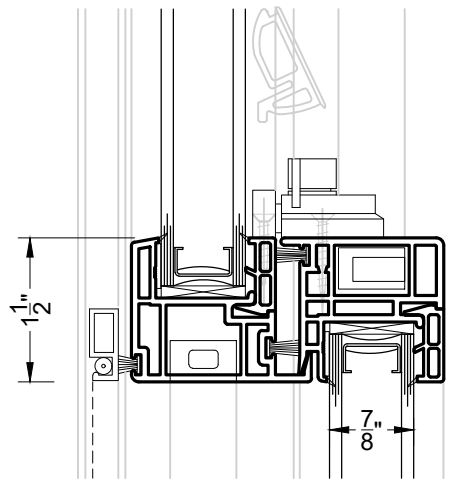
- LOW-E COATING & ARGON FILLED IGU
- CUSTOM FINISH AND CUSTOM COLORS
- SPIRAL OR BLOCK AND TACKLE BALANCE
- HALF OR FULL SCREEN
- LIMIT STOPS
- INSTALLATION SCREWS
- GRIDS
- OTHER OPTIONAL ACCESSORIES



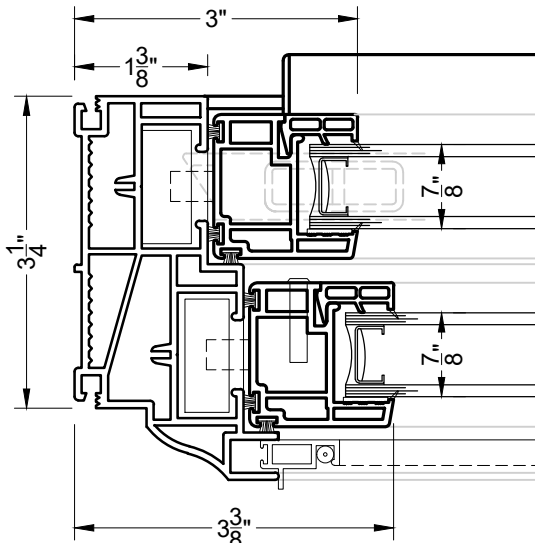
200 DOUBLE HUNG



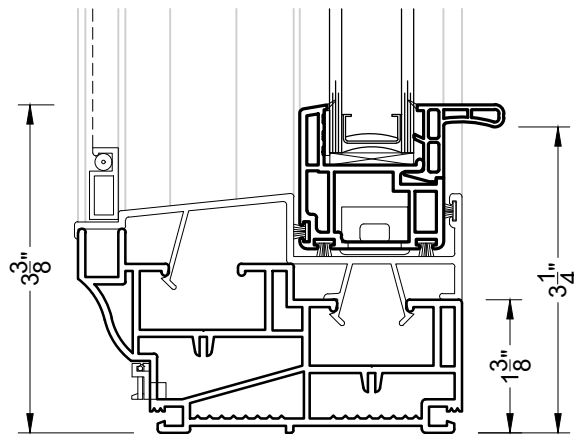
① HEAD
DH200



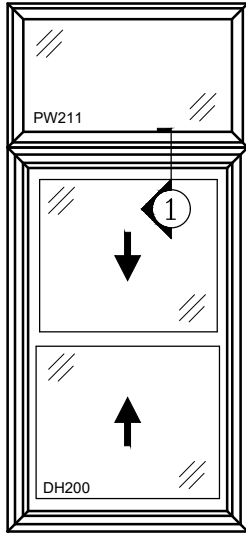
② MEETING RAIL
DH200



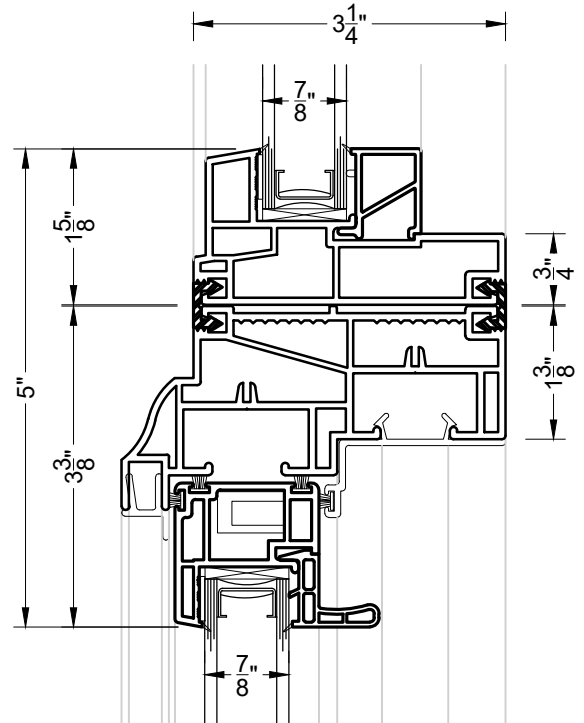
④ JAMB
DH200



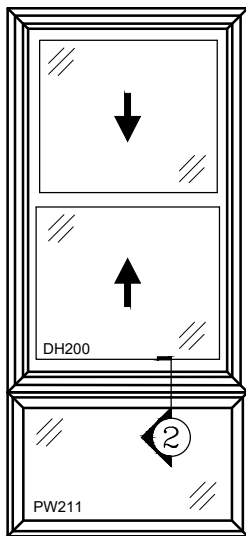
③ SILL
DH200



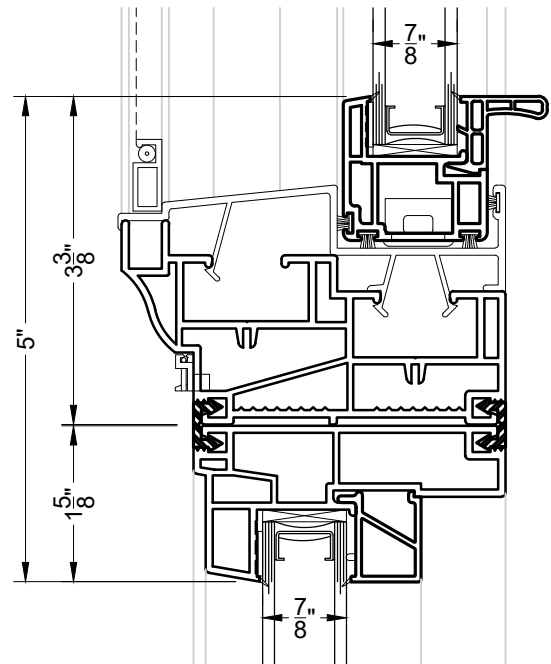
PW211 OVER DH200



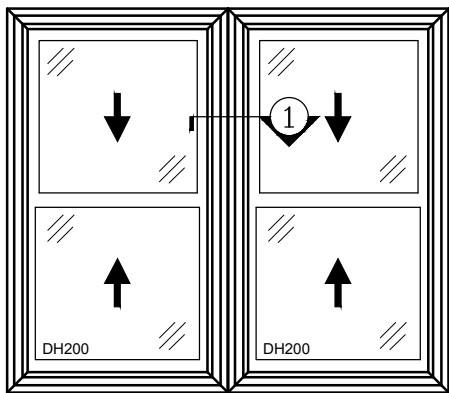
① H-MULLION
 PW211 OVER DH200



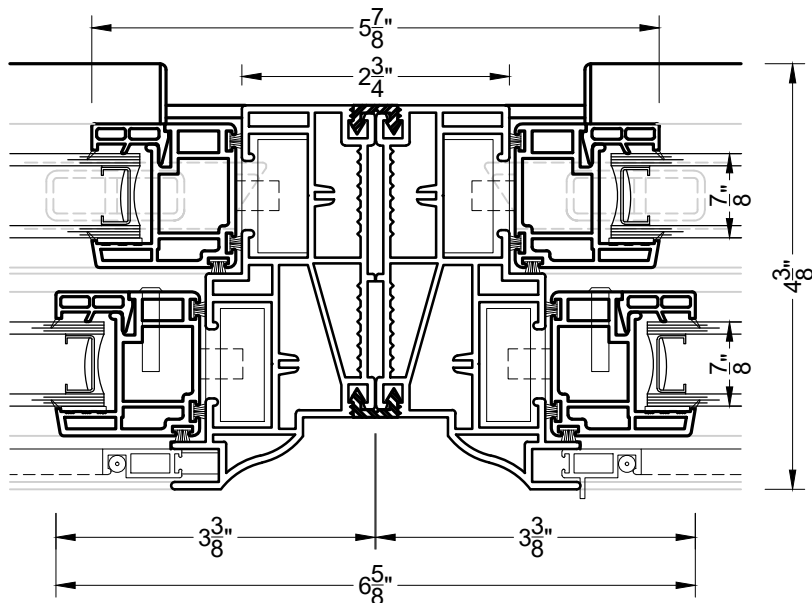
DH200 OVER PW211



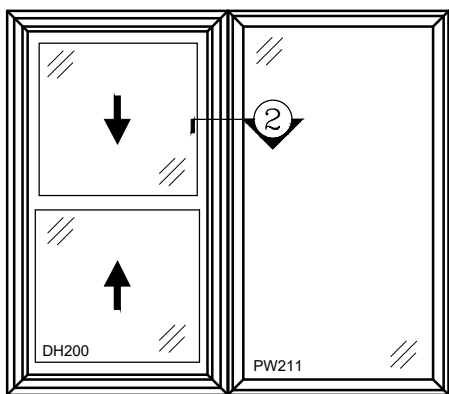
② H-MULLION
 DH200 OVER PW211



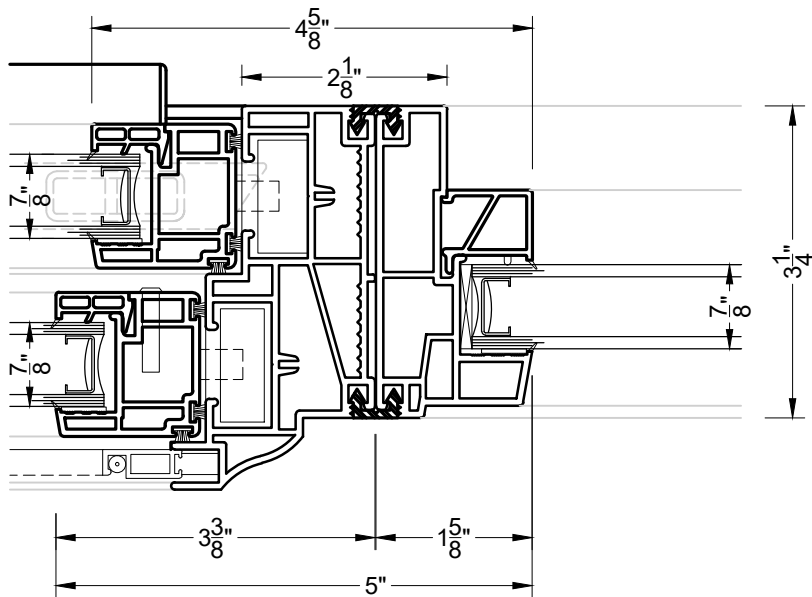
DH200 & DH200



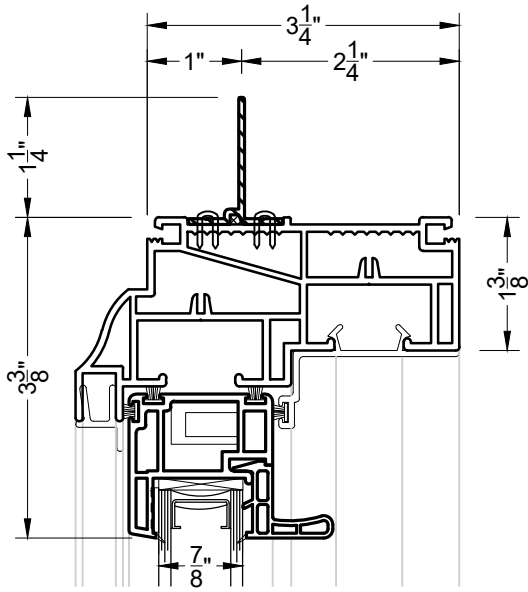
① 0 DEGREE MULLION
 DH200 & DH200



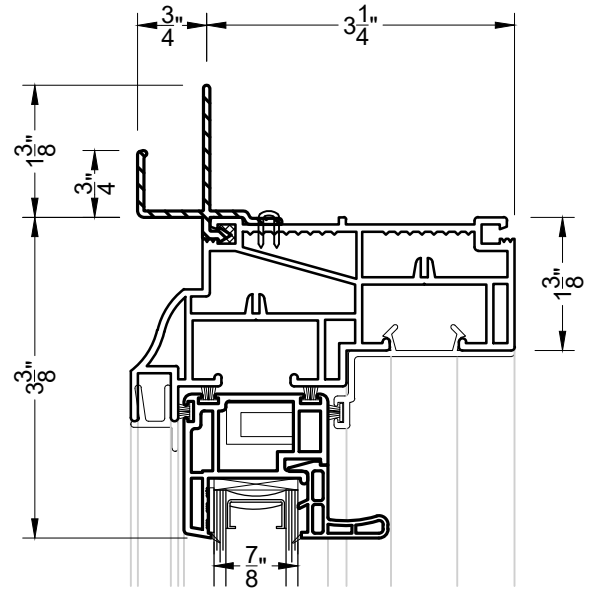
DH200 & PW211



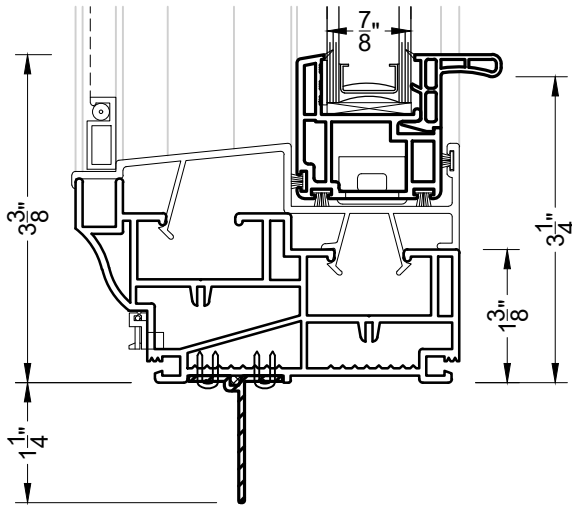
② 0 DEGREE MULLION
 DH200 & PW211



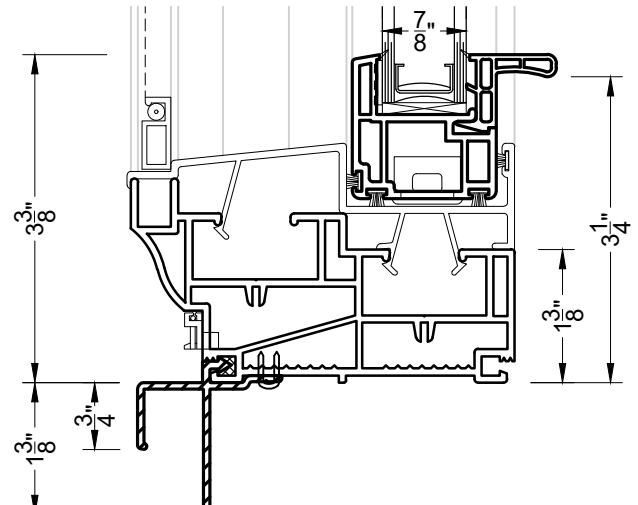
① HEAD - APPLIED NAILING FIN
 DH200



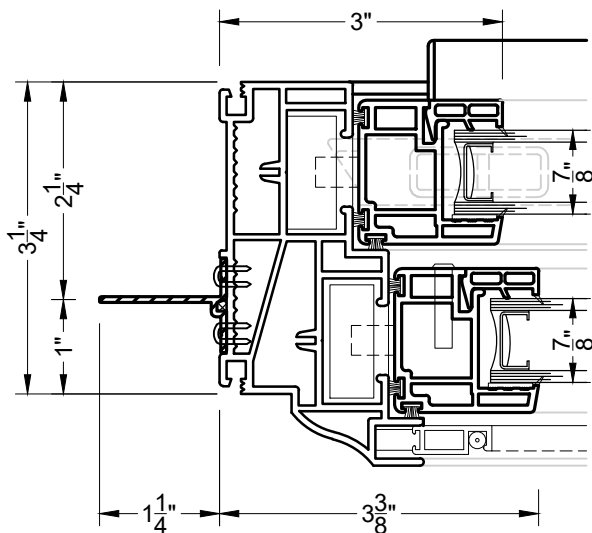
①A HEAD - APPLIED J-CHANNEL
 DH200



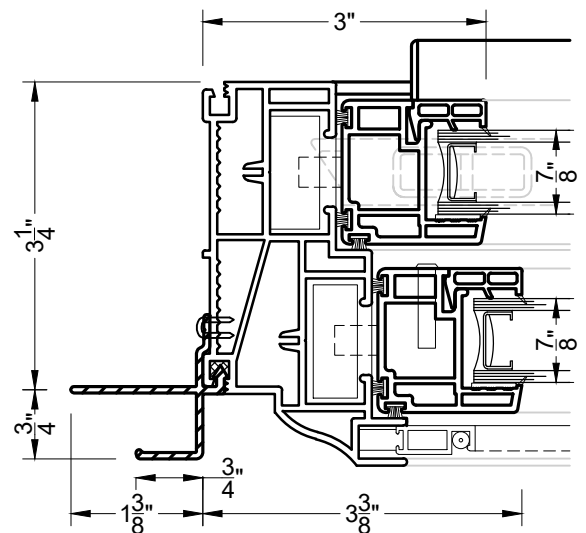
② SILL - APPLIED NAILING FIN
 DH200



②A SILL - APPLIED J-CHANNEL
 DH200



③ JAMB - APPLIED NAILING FIN
 DH200



③A JAMB - APPLIED J-CHANNEL
 DH200