

SERIES 2600 DOUBLE HUNG WINDOWS

TEST SIZE W x H	AAMA RATING	AIR INFILTRATION	DESIGN PRESSURE	WATER RESISTANCE	U-VALUE	SHGC	VT
56" x 91"	CW-PG50	≤0.30 cfm/ft ²	50 psf	7.5 psf	0.37-0.60	0.17-0.60	0.31-0.62
42" x 78"	CW-PG65	≤0.30 cfm/ft ²	65 psf	9.75 psf			

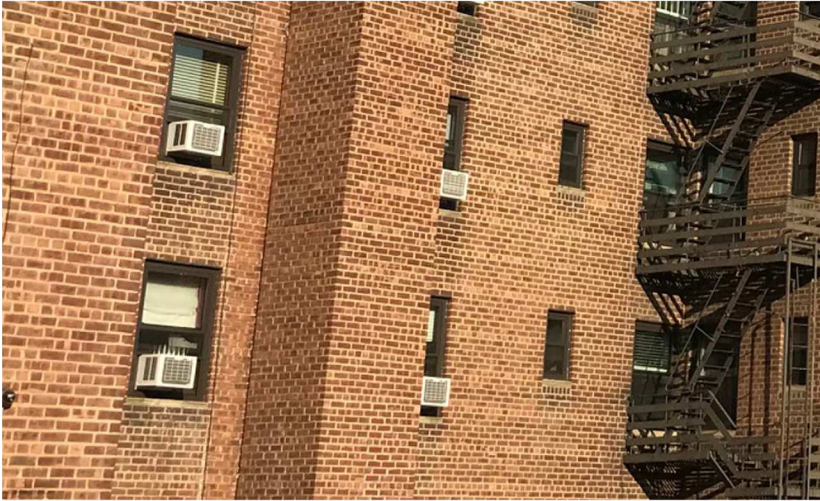


TABLE OF CONTENT

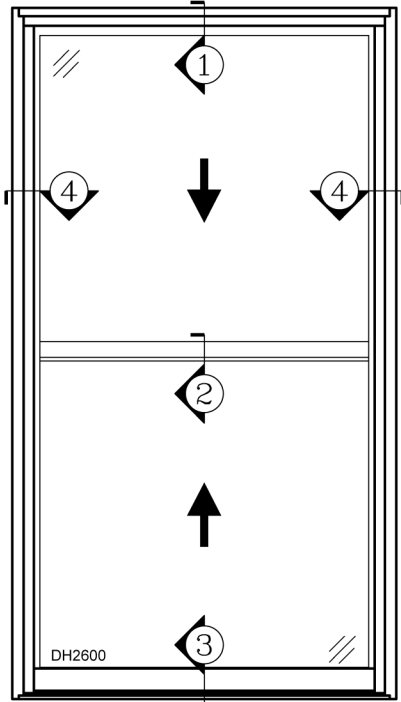
- INTRODUCTION -P1
- SECTION DETAILS -P2
- MULLION -P3-P4
- NAIL FIN -P5
- FACE FLANGE -P6-P7
- A/C ORIEL KIT -P8-P9

FEATURES

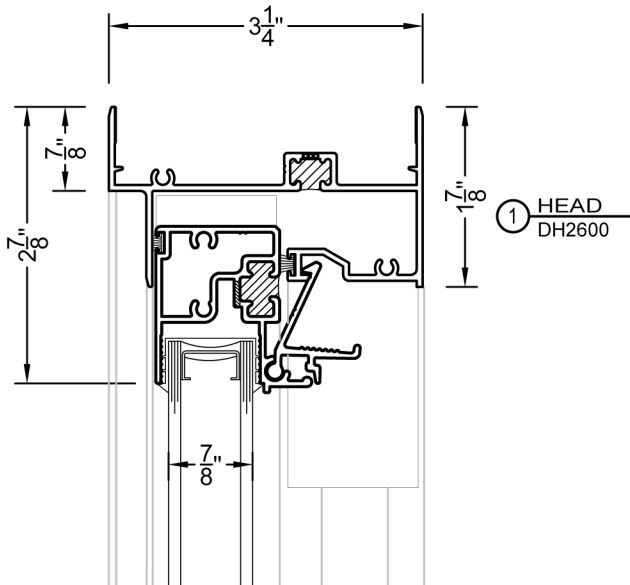
- ALUMINUM THERMAL-BREAK DOUBLE HUNG TILT WINDOW
- 3-1/4" FRAME DEPTH
- 7/8" DOUBLE PANE INSULATED GLASS
- AAMA 2604 POWDER COAT PAINT
- EQUAL SIGHTLINE DESIGN
- SLOPED SILL
- SILL WITH 1/2" EXTERIOR LEG
- TILT SASH WITH TILT LATCH
- CONTINUOUS POSITIVE LATCHING RAIL AT SILL
- ANTI-DRIFT HEAD CLIP LOCK
- THREE LAYERS OF WEATHER STRIP ON SILL
- MEETING RAIL LOCK
- SPIRAL BALANCES
- INSTALLATION SCREWS

OPTIONAL SELECTIONS

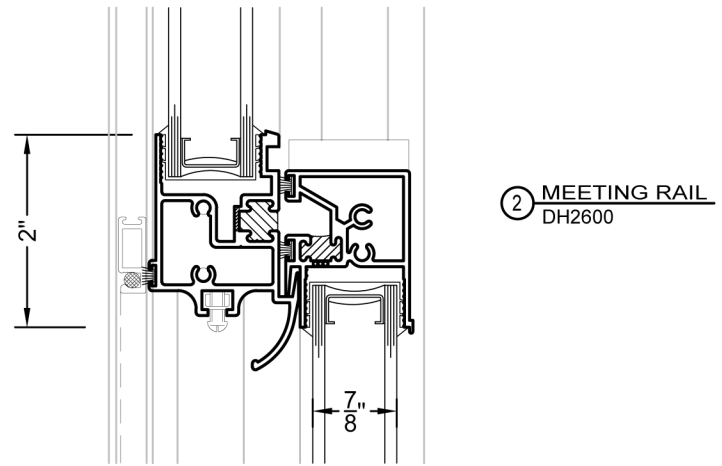
- LOW-E COATING & ARGON FILLED IGU
- SILL WITH EQUAL LEG
- 1-1/4" NAILING FIN (1-1/8" SETBACK)
- FACE FLANGE WITH VARIOUS SIZE
- CUSTOM FINISH AND CUSTOM COLORS
- GRIDS
- BLOCK & TACKLE OR ULTRA LIFT BALANCES
- OTHER OPTIONAL ACCESSORIES
- A/C ORIEL KIT
- HALF OR FULL SCREEN
- SASH STOPS



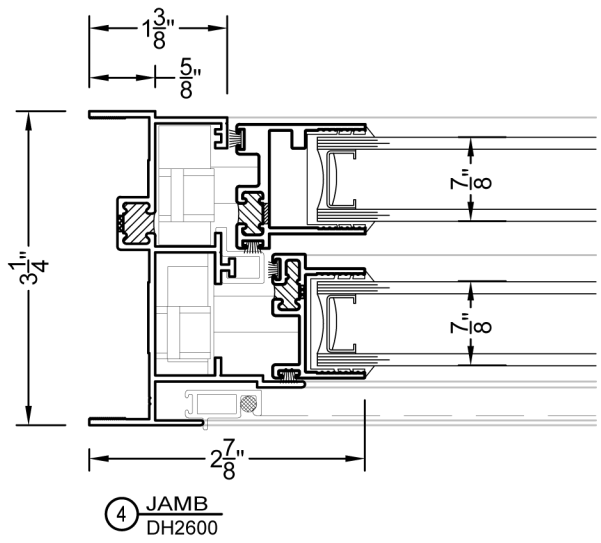
2600 DOUBLE HUNG



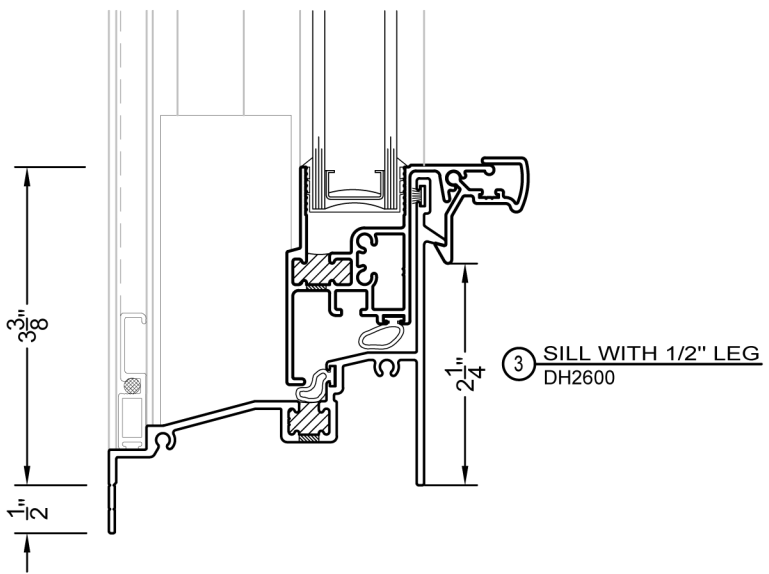
① HEAD
DH2600



② MEETING RAIL
DH2600

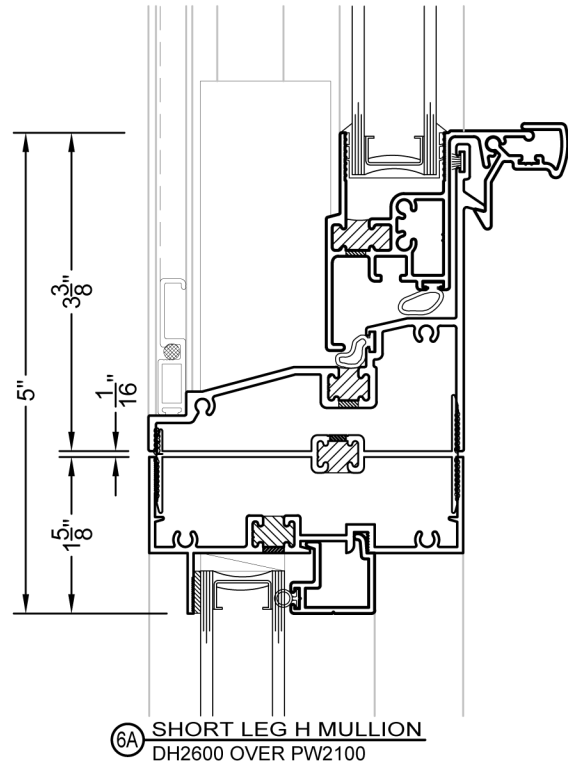
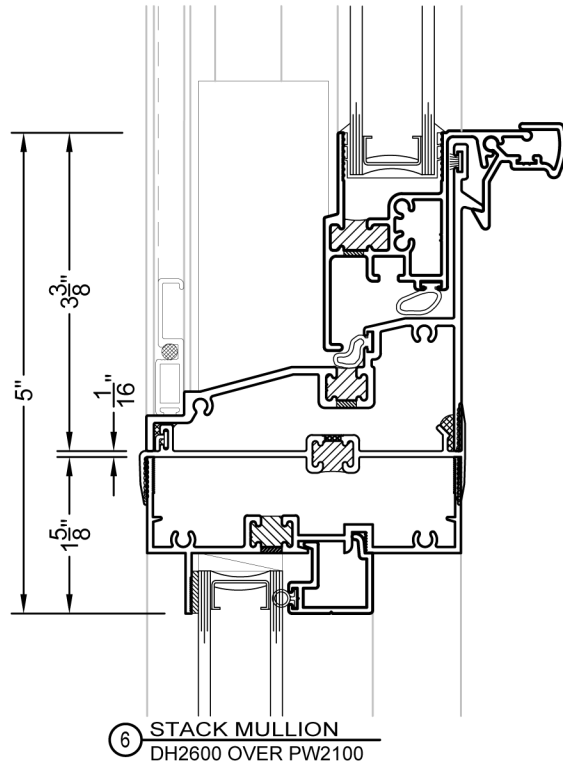
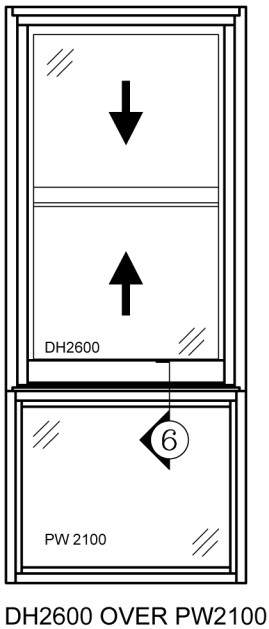
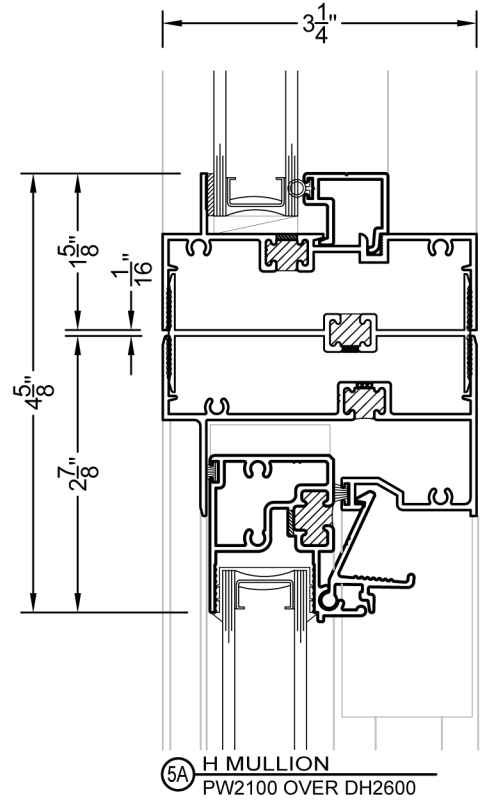
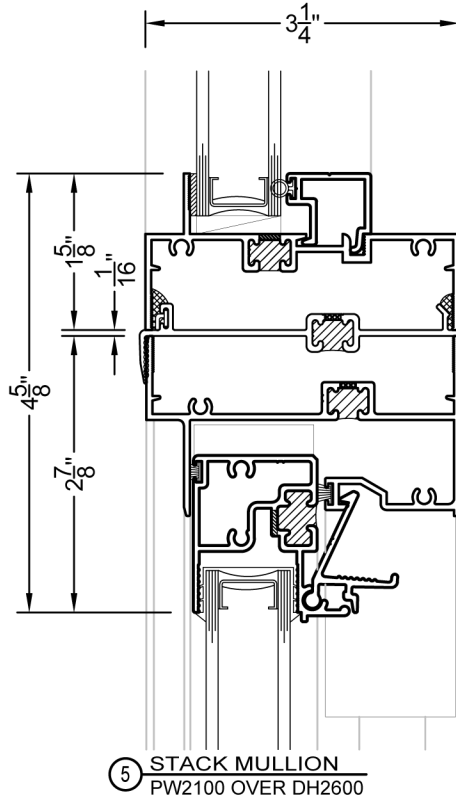
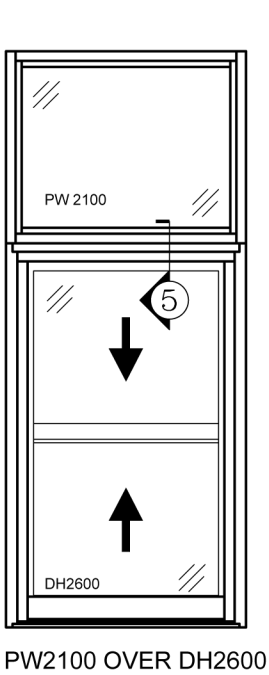


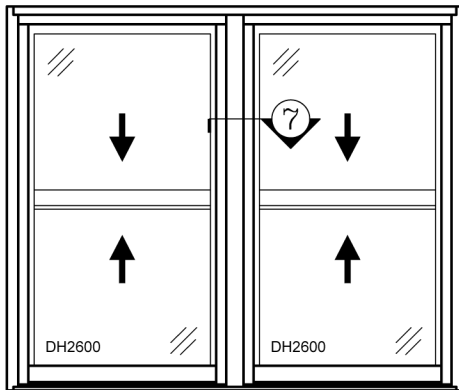
④ JAMB
DH2600



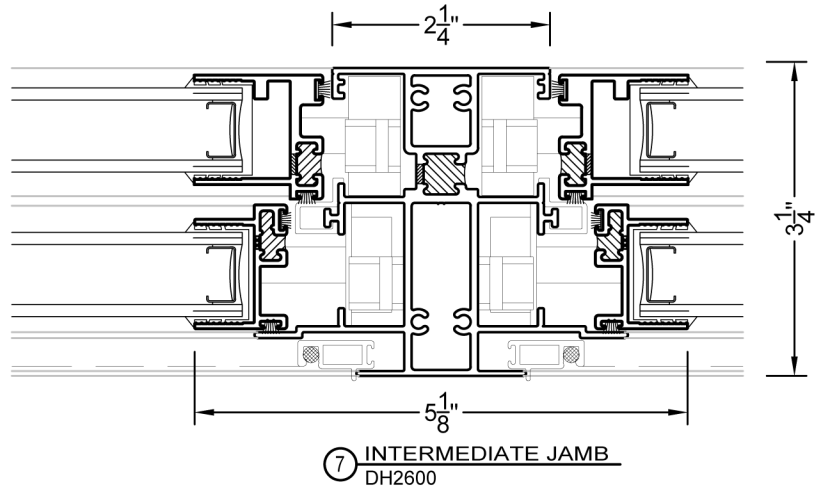
③ SILL WITH 1/2" LEG
DH2600

VER: 2020.03

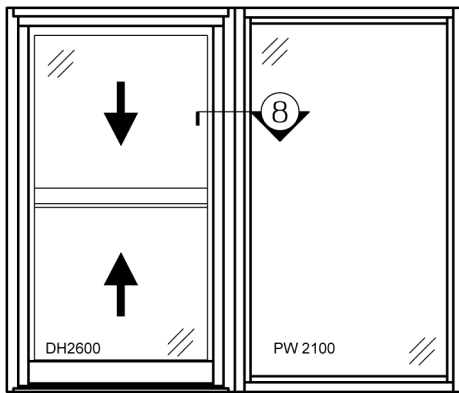




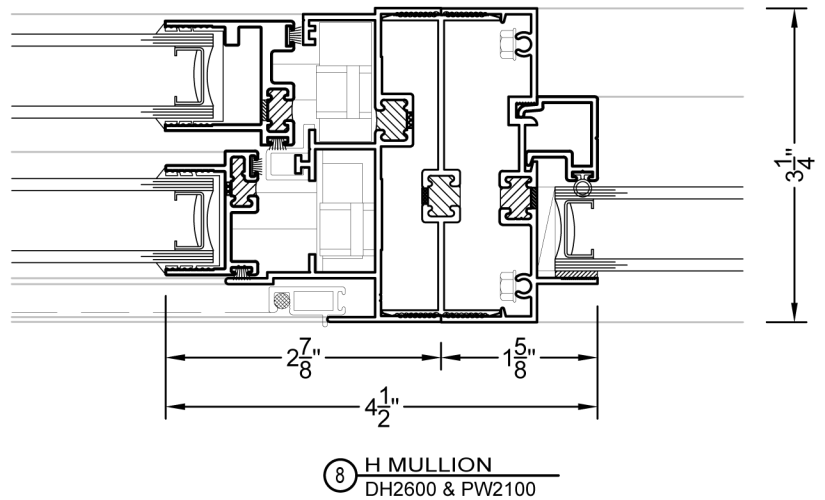
2600 TWIN DOUBLE HUNG



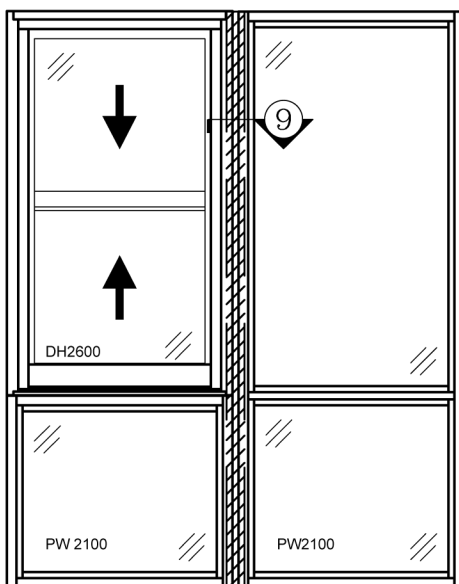
⑦ INTERMEDIATE JAMB
 DH2600



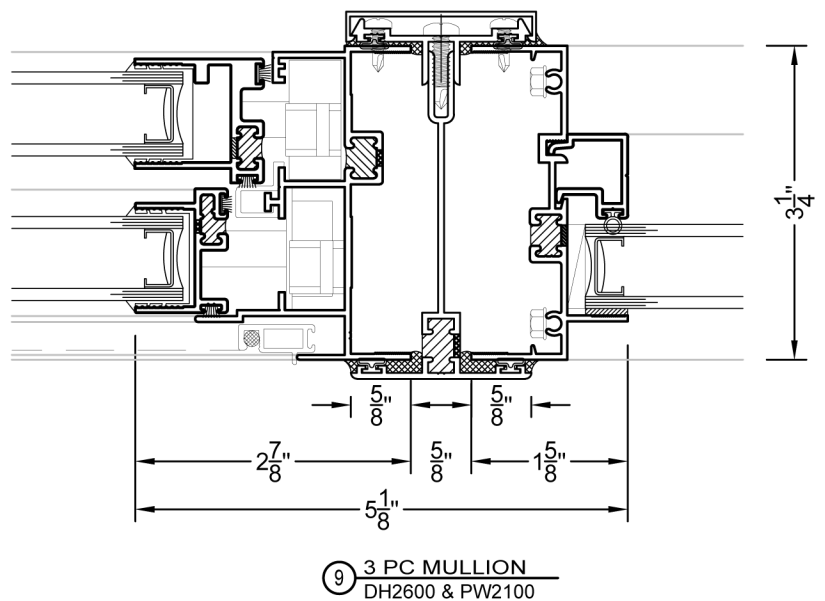
DH2600 & PW2100



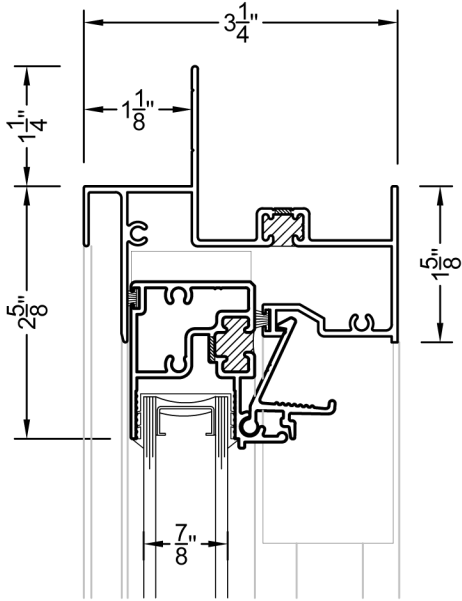
⑧ H MULLION
 DH2600 & PW2100



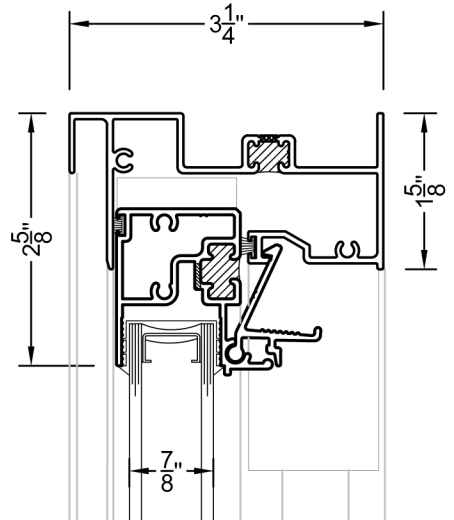
DH2600 OVER PW2100 &
 PW2100T W/ 3PC MULLION



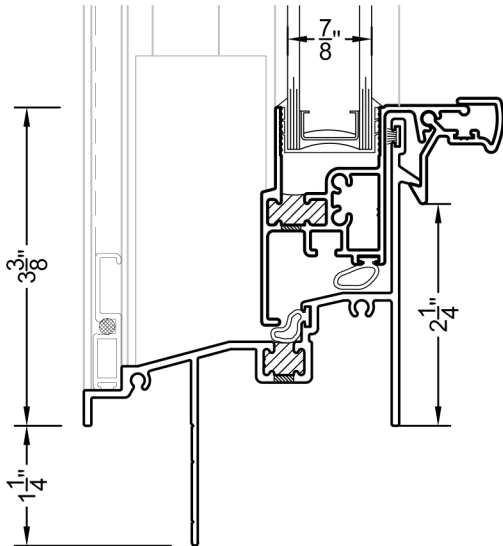
⑨ 3 PC MULLION
 DH2600 & PW2100



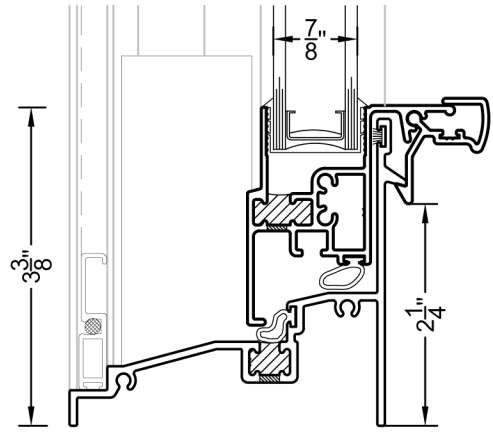
① NAILING FIN HEAD
DH2600



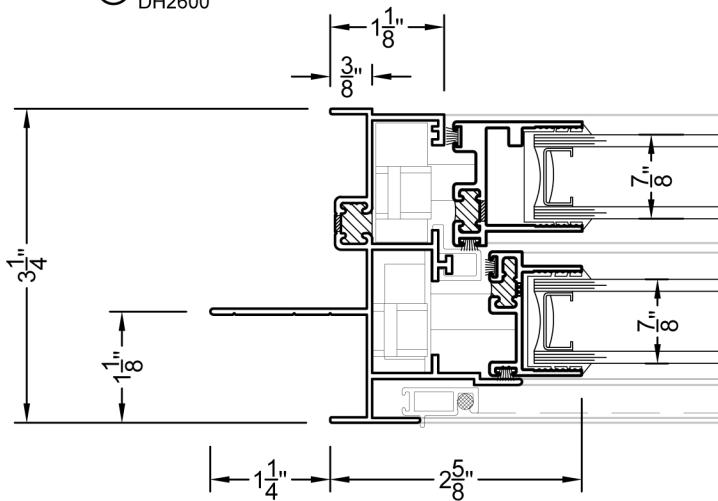
①A NAILING FIN HEAD W/O FIN
DH2600



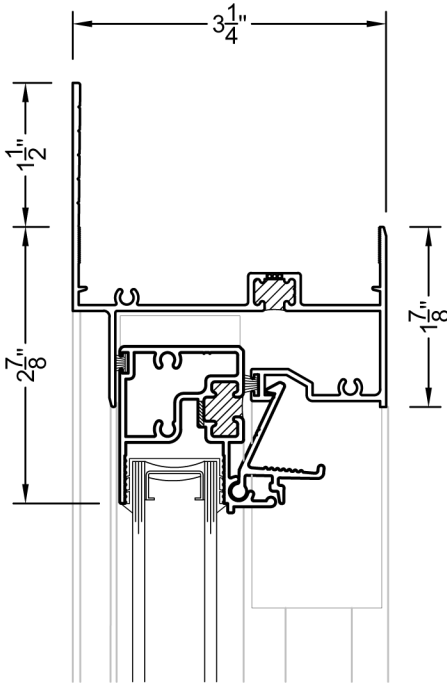
② NAILING FIN SILL
DH2600



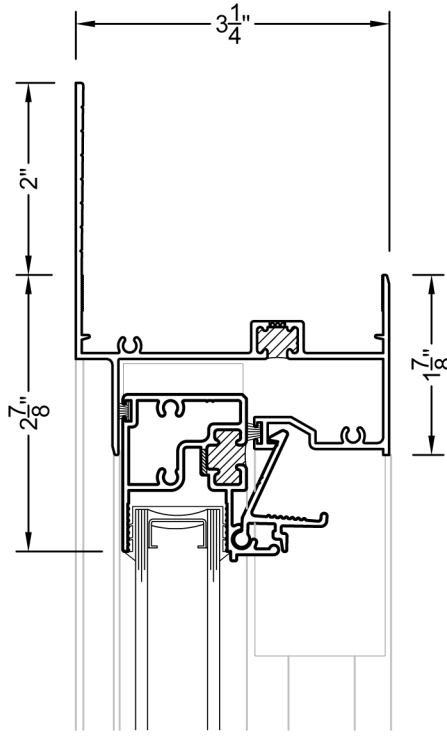
②A SILL WITH EQUAL LEG
DH2600



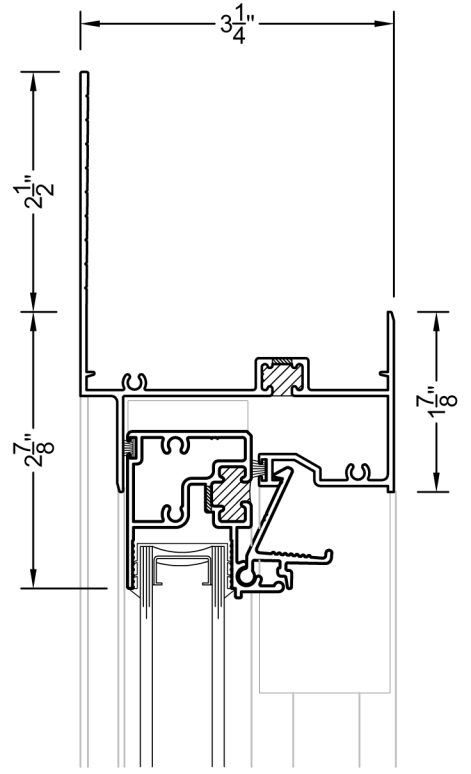
③ NAILING FIN JAMB
DH2600



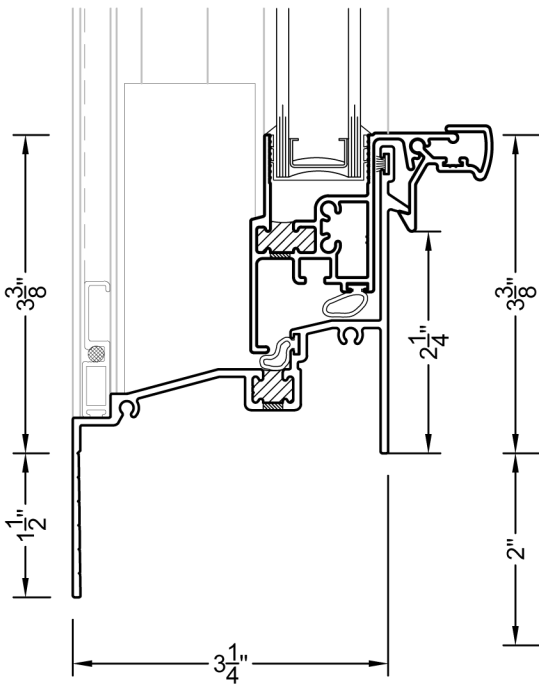
① 1-1/2" FLANGE HEAD
 DH2600



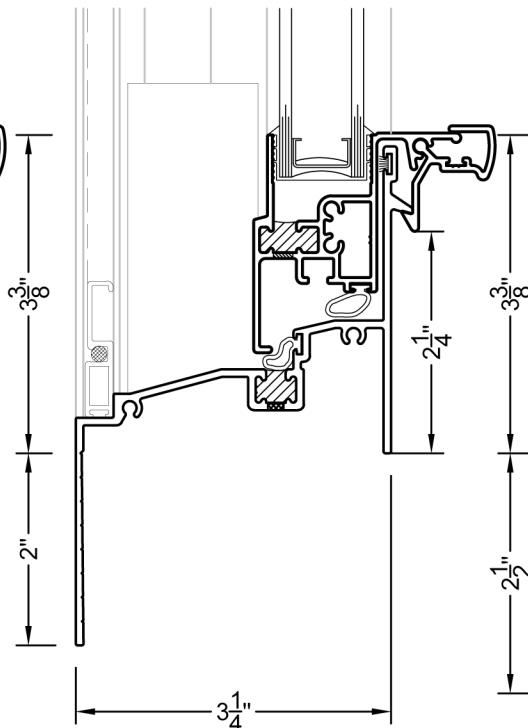
①A 2" FLANGE HEAD
 DH2600



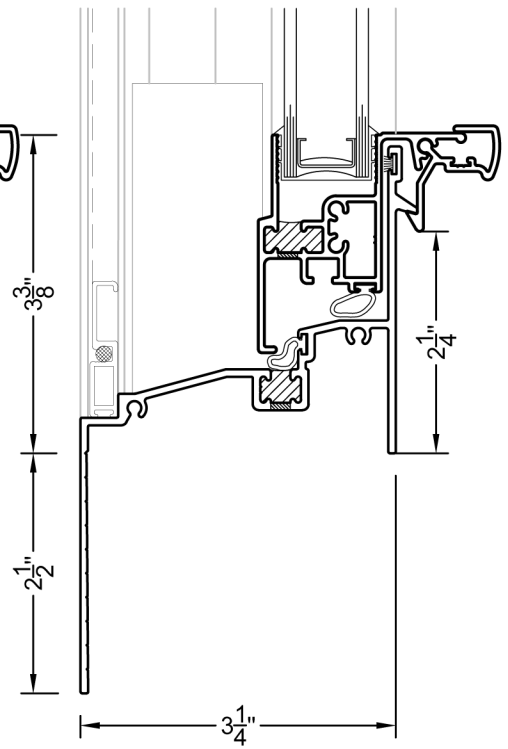
①B 2-1/2" FLANGE HEAD
 DH2600



② 1-1/2" FLANGE SILL
 DH2600

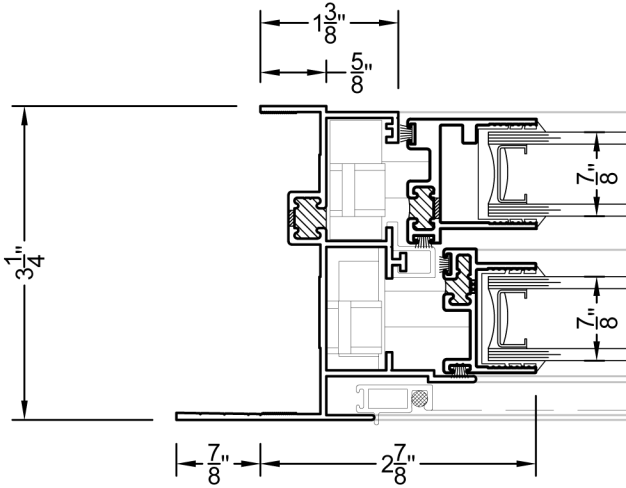


②A 2" FLANGE SILL
 DH2600

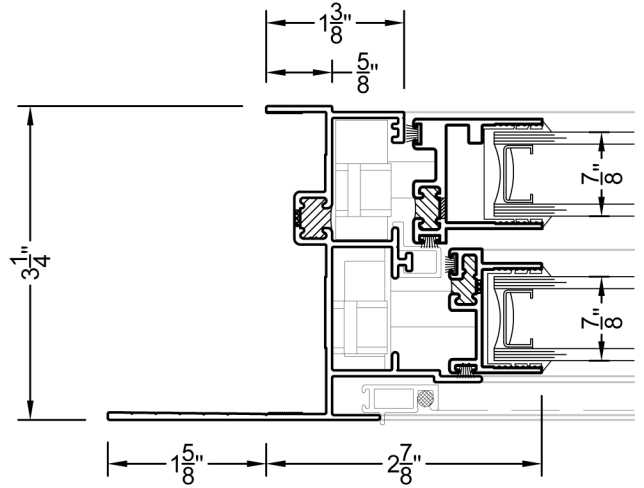


②B 2-1/2" FLANGE SILL
 DH2600

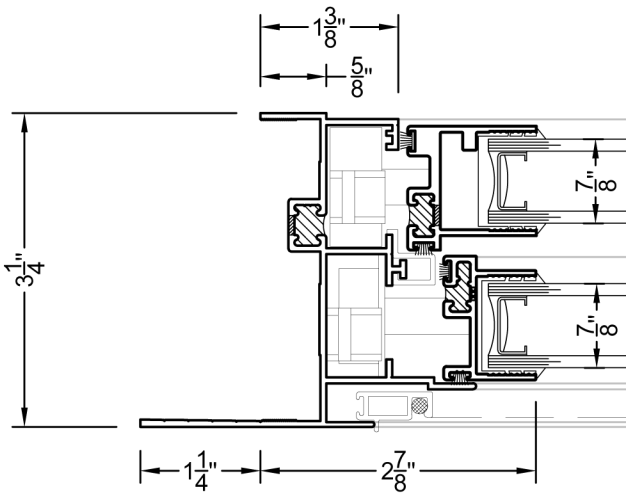
VER: 2020.03



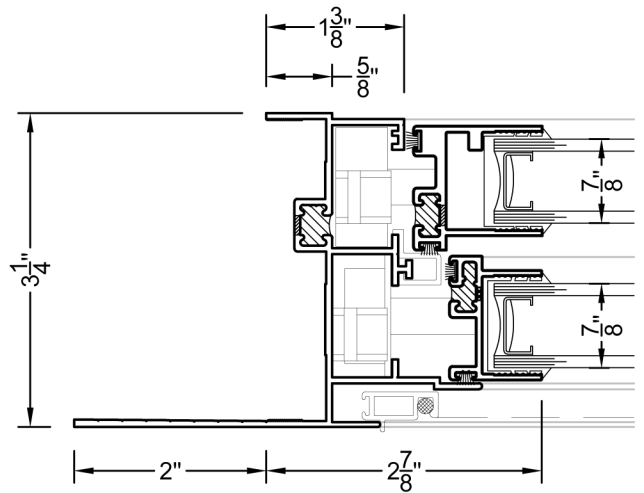
③ 7/8" FLANGE JAMB
DH2600



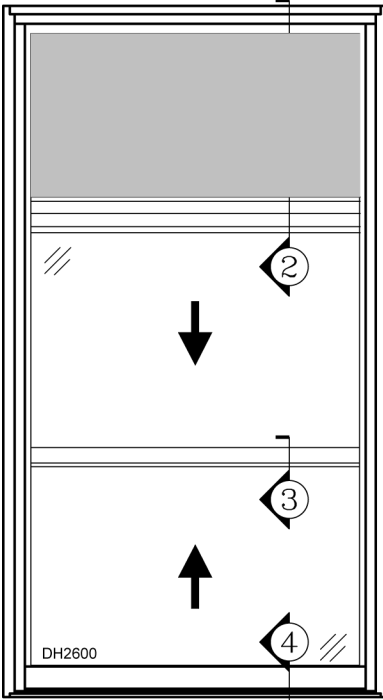
③B 1-5/8" FLANGE JAMB
DH2600



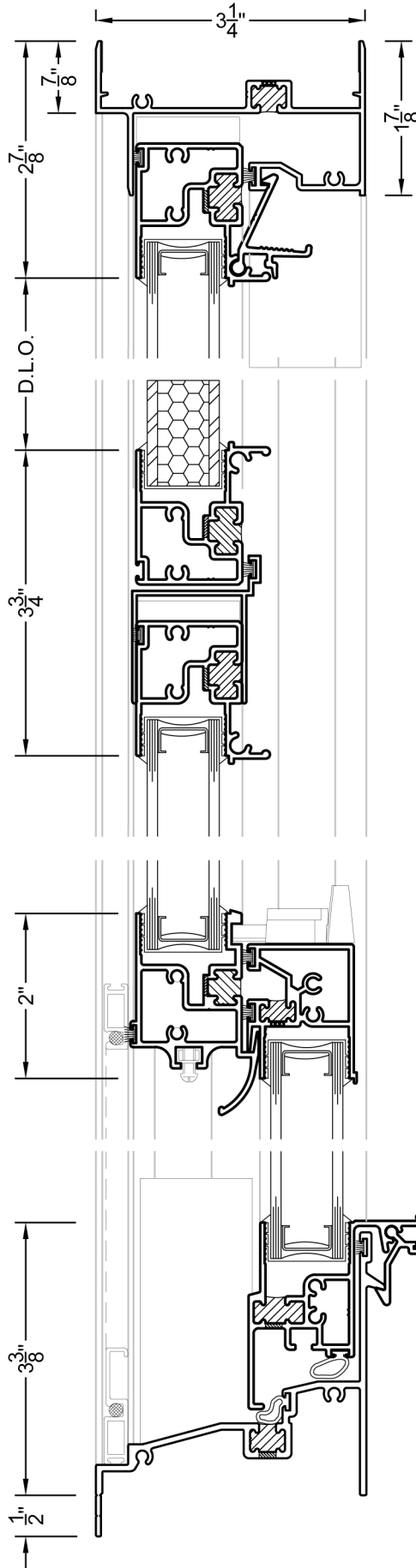
③A 1-1/4" FLANGE JAMB
DH2600



③C 2" FLANGE JAMB
DH2600



DH2600 WITH A/C ORIEL KIT
 AT TOP SASH



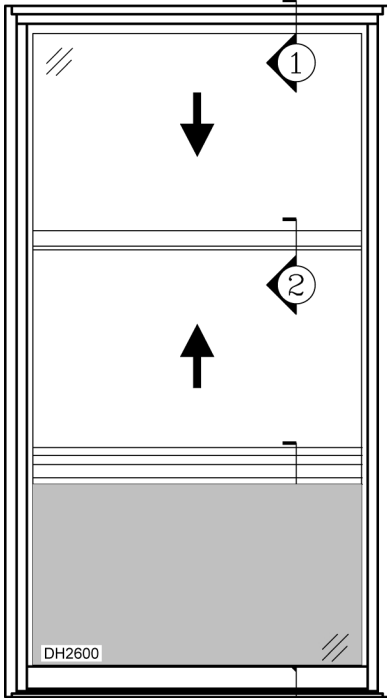
① HEAD
 DH2600

② AC KIT
 DH2600

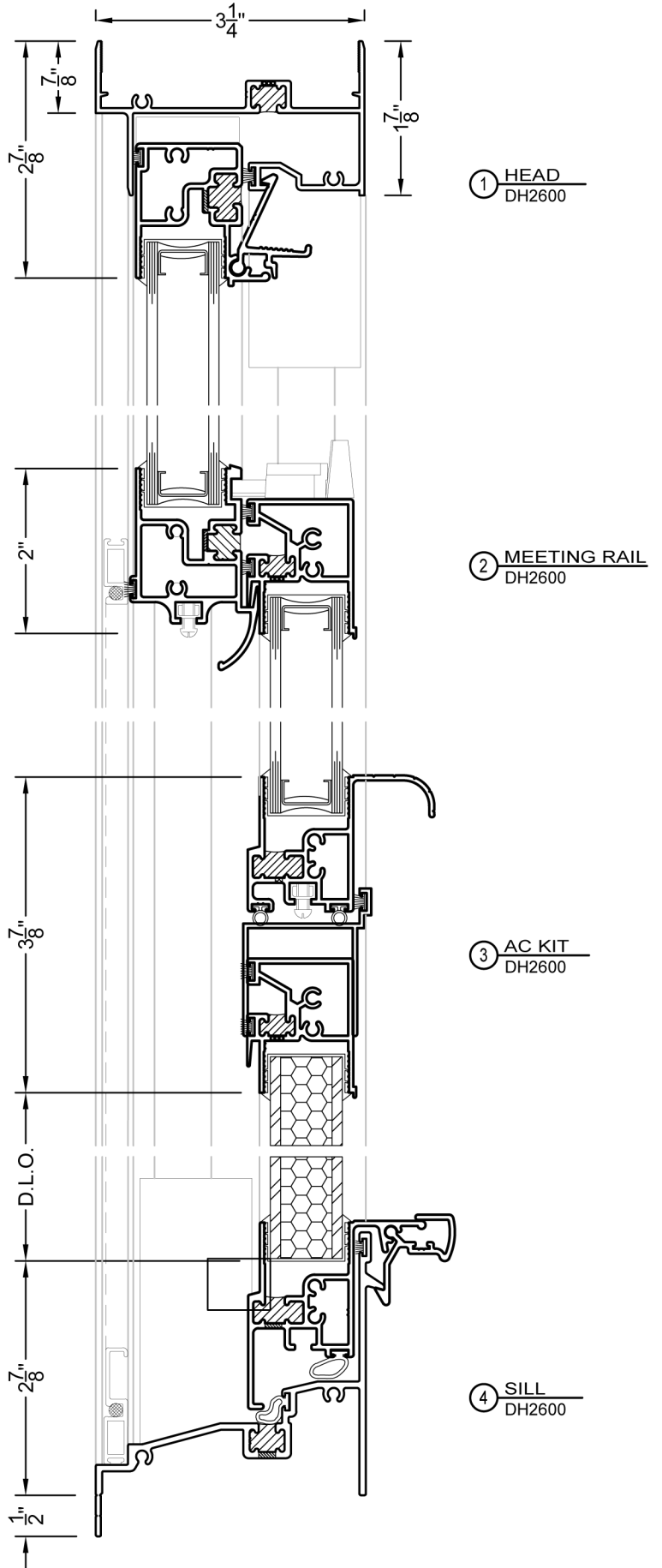
③ MEETING RAIL
 DH2600

④ SILL
 DH2600

NO WATER PERFORMANCE
 WARRANTY FOR A/C ORIEL KIT.
 PLEASE CONTACT YOUR SALE REP.
 FOR MORE INFORMATION.



DH2600 WITH A/C ORIEL KIT
 AT BOTTOM SASH



NO WATER PERFORMANCE
 WARRANTY FOR A/C ORIEL KIT.
 PLEASE CONTACT YOUR SALE REP.
 FOR MORE INFORMATION.