

VINYL SERIES 1600 VEKA SLIDING DOOR

BUILD	TEST SIZE (W x H)	AAMA RATING	AIR INFILTRATION (CFM/FT ²)	DESIGN PRESSURE (PSF)	WATER RESISTANCE (PSF)	U-FACTOR	SHGC	VT
XO	72" x 80"	LC-PG50	< 0.30	50	7.52	0.23-0.31	0.19-0.32	0.43-0.65
XO (LIGHT REINFORCEMENT)	72" x 80"	R-PG25	< 0.30	25	5.43	0.23-0.31	0.19-0.32	0.43-0.65
OX	96" x 96"	LC-PG35	< 0.30	35	7.52	0.23-0.31	0.19-0.32	0.43-0.65
OXO	108" x 96"	LC-PG35	< 0.30	35	7.52	0.23-0.31	0.19-0.32	0.43-0.65
OXO	108" x 80"	LC-PG50	< 0.30	50	7.52	0.23-0.31	0.19-0.32	0.43-0.65
OXXO	143" x 80"	R-PG30	< 0.30	40	4.60	0.23-0.31	0.19-0.32	0.43-0.65

TABLE OF CONTENTS

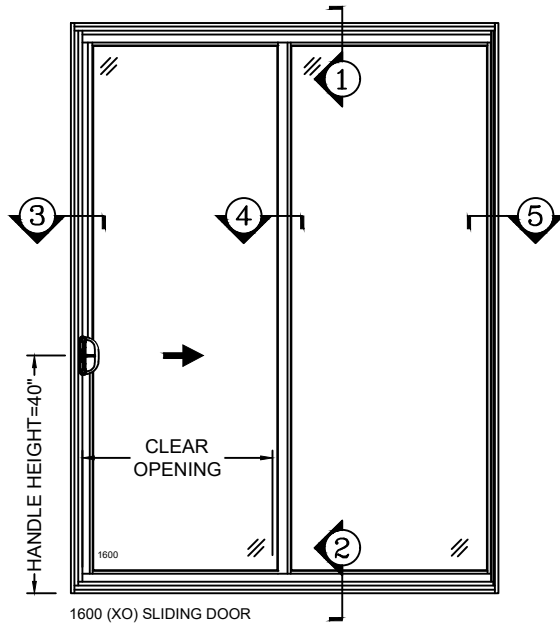
- 1600 SLIDING DOOR: 2-LITE -P2
- MULLION DETAILS -P3

FEATURES

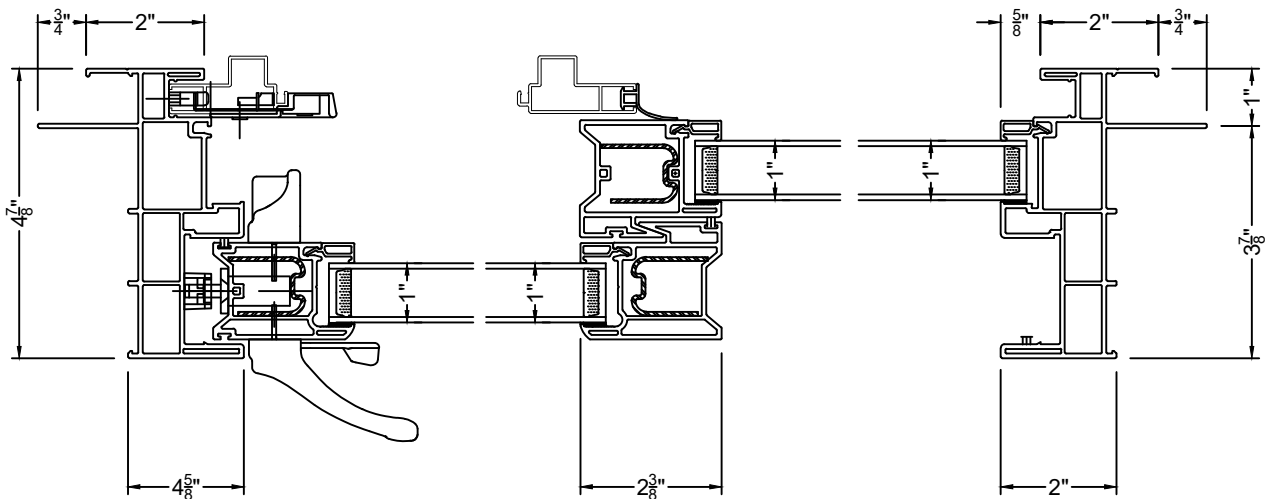
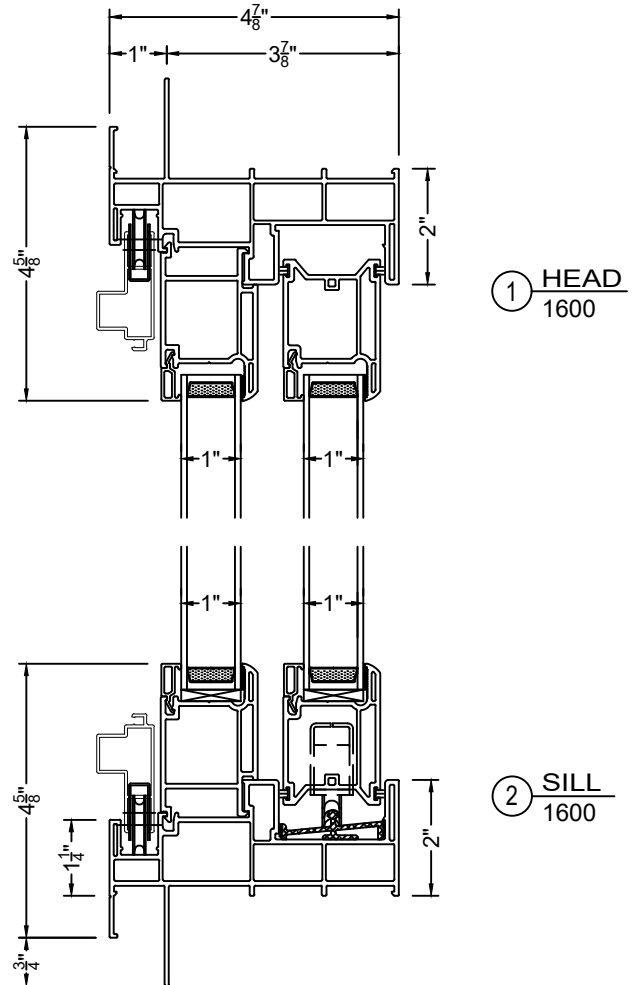
- 4-7/8" FRAME DEPTH
- INTEGRAL NAILING FIN & J-CHANNEL
- 1" INSULATED GLASS
- DOUBLE STRENGTH TEMPERED GLASS
- ADJUSTABLE STEEL TANDEM ROLLERS
- DOUBLE LAYERING WEATHERSTRIPPING
- FIBERMESH LOCKING SCREEN
- TWO-LITE DOOR (OX, XO)
- THREE-LITE DOOR (OXO, XOO, OOX)

OPTIONAL SELECTIONS

- LOW-E COATING & ARGON FILLED IGU
- CUSTOM FINISH AND CUSTOM COLOR
- GBG OR EXTERIOR APPLIED GRIDS
- KEYED LOCKED CYLINDER
- FIELD REVERSIBLE
- OTHER OPTIONAL ACCESSORIES



FOR 32\"

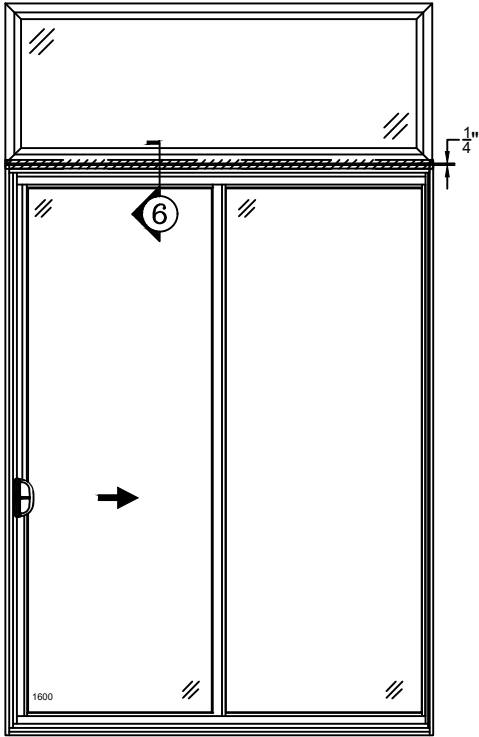


3 JAMB AT MOVABLE PANE
1600

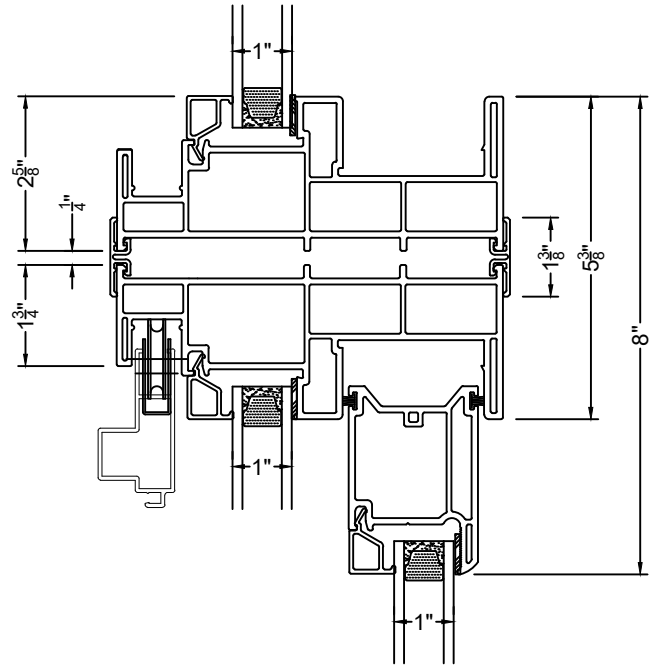
4 MEETING RAIL
1600

5 JAMB AT FIXED PANE
1600

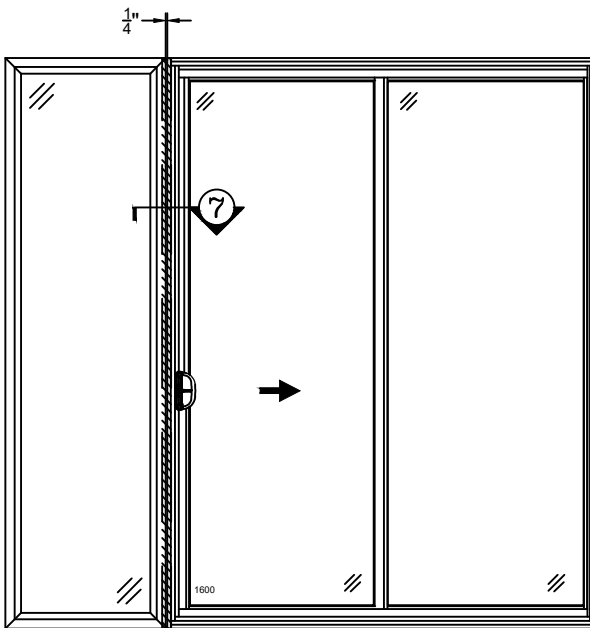
VER: 2024.07



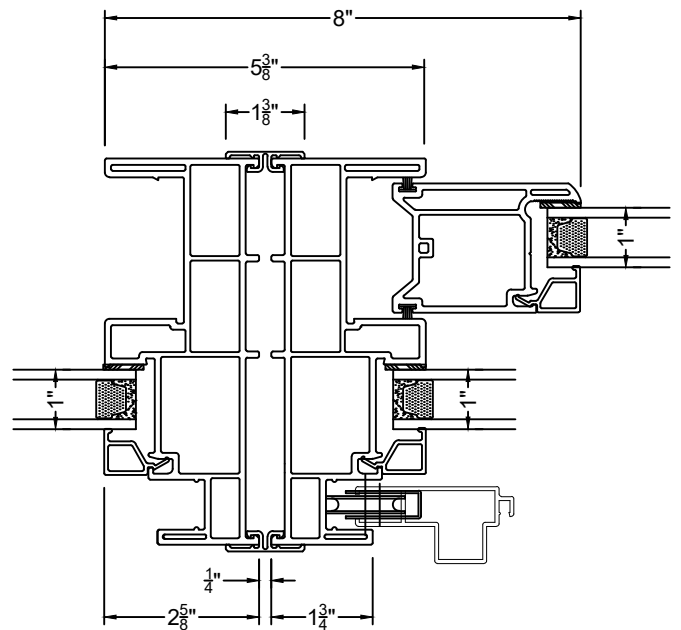
TRANSOM OVER SLIDING DOOR (XO)



⑥ MULLION
TRANSOM OVER 1600



SIDELITE NEXT TO SLIDING DOOR (OX)



⑦ MULLION
SIDELITE TO 1600

VER: 2024.07