

1. CHECK PARTS

Foot locker pack comes with secondary door limiter (Foot lock), keeper (Strike plate) and (8) pieces of #8x1" stainless steel installation screws. You will be needing safety goggles, working gloves, measuring tape and Phillips screw driver to successfully install a foot lock device.

2. FOOT LOCK INSTALLATION

First, close and lock patio door's moving panel. Make sure it is operational and locking properly with the door keeper. Check secondary door limiter if it is working by pushing the foot locker head and engaging foot bolt (Figure 1). Press foot lock release button to release foot bolt. Center the foot lock into the moving panel stile and 1/8" away from the door sill leg (Figure 2). Install footlock and fasten with (4) pieces of #8x1" stainless steel screws.

3. STRIKE PLATE INSTALLATION

Press down foot lock bolt (Figure 1). Install and align strike plate on patio door sill leg (Figure 3) and center foot lock bolt on strike plate's lock position groove (Figure 4). Install strike plate and fasten with (2) pieces of #8x1" stainless steel screws (Figure 4).

4. TEST FOR OPERATION

Push foot lock release button to release foot lock bolt (Figure 4). Unlock patio door and slide sideways to move foot lock into venting lock position (Figure 5). Press foot lock bolt downward to lock.

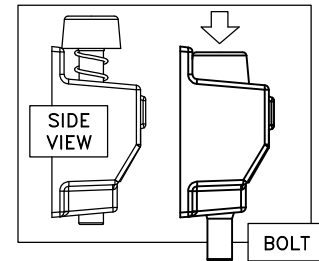


FIGURE 1

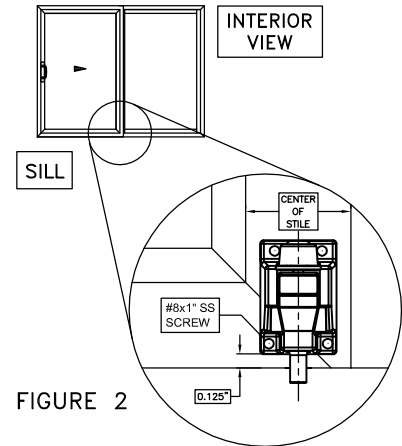


FIGURE 2

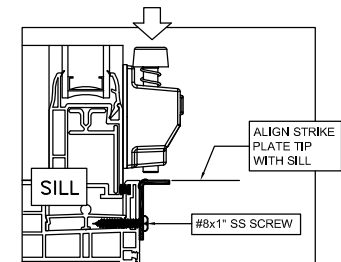


FIGURE 3

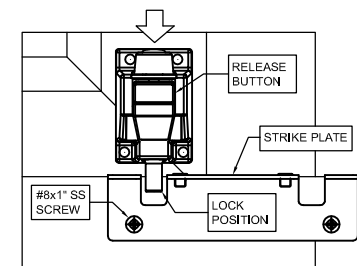


FIGURE 4

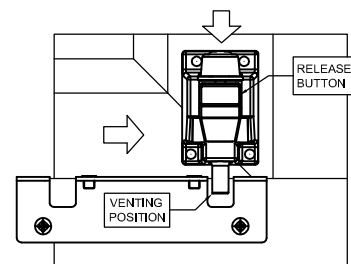
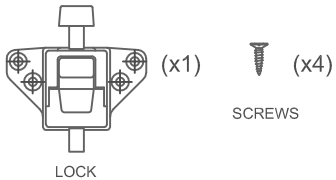


FIGURE 5

SECONDARY DOOR LOCK INSTRUCTIONS


1 CHECK PARTS



(x1) LOCK

(x4) SCREWS

2 TOOLS YOU NEED

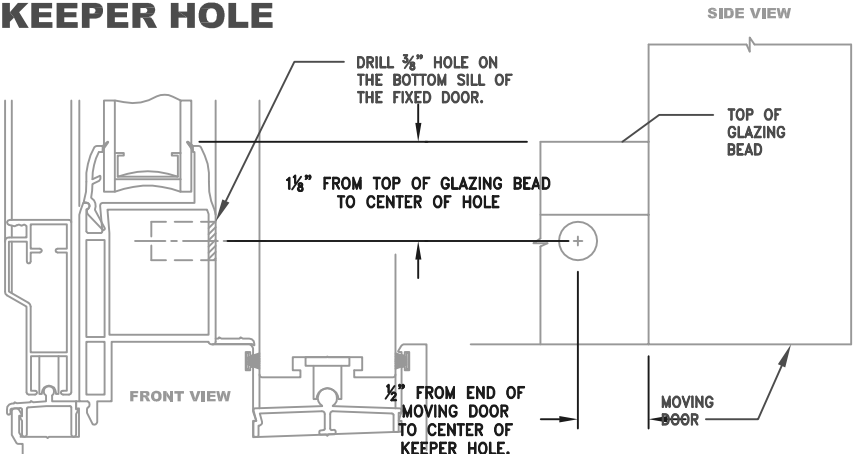


PHILIPS SCREW DRIVER

DRILL BIT SIZE $\frac{3}{8}$ "

TAPE MEASURE

3 DRILL KEEPER HOLE



FRONT VIEW

SIDE VIEW

DRILL $\frac{3}{8}$ " HOLE ON THE BOTTOM SILL OF THE FIXED DOOR.

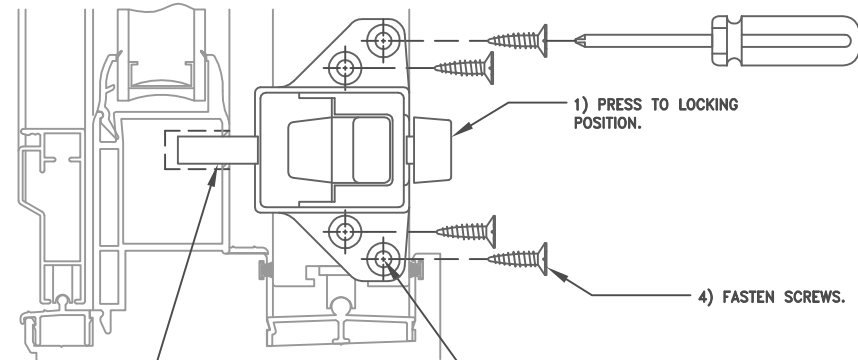
1" FROM TOP OF GLAZING BEAD TO CENTER OF HOLE

$\frac{1}{2}$ " FROM END OF MOVING DOOR TO CENTER OF KEEPER HOLE.

TOP OF GLAZING BEAD

MOVING DOOR

4 INSTALL AND SECURE LOCK



FRONT VIEW

1) PRESS TO LOCKING POSITION.

2) INSERT LOCK BAR INSIDE KEEPER HOLE.

3) MARK FASTENER HOLES USING MARKER.

4) FASTEN SCREWS.