

Series 255



Features

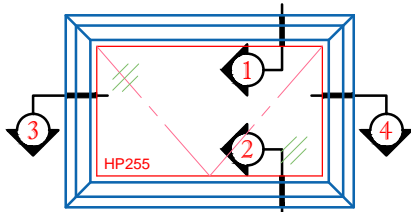
- Frame Depth = 3¼”
- Insulated Glass Unit Depth = 7⁄8”
- Soft Coat Low-E & Argon filled IGU
- Designer Beveled Sash
- Fusion Welded Frame & Sashes
- Continuous Polyethylene Rigid Seal
- Strong Multi-Chamber Construction
- Two Piece Cam Turn Handle Lock

Options

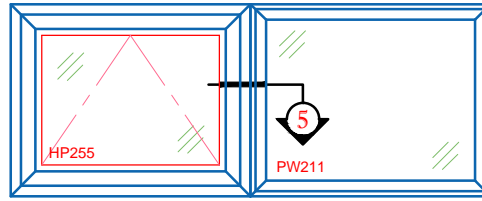
- Extruded Beige Color
- Painted Exterior Custom Color
- Between the Glass Grids or Exterior Applied Grids
- Nailing Fin Attachment
- Snap-On J Channel



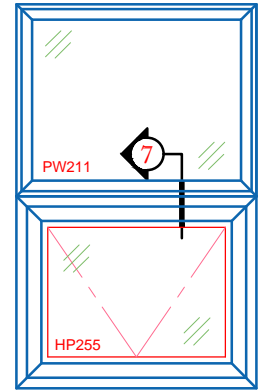
PRODUCT SPECS	SERIES	STYLES	FRAME DEPTH	IG DEPTH	AAMA	ENERGY STAR	ENHANCED W/ PERFORMA TC™ GLASS PACKAGE
	255	Hopper Up Hopper Down	3¼”	7⁄8”			



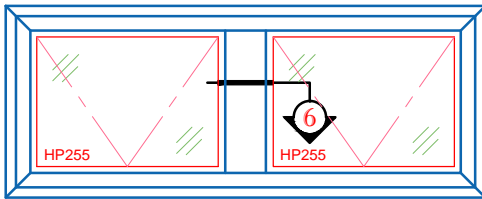
255 HOPPER DOWN WINDOW



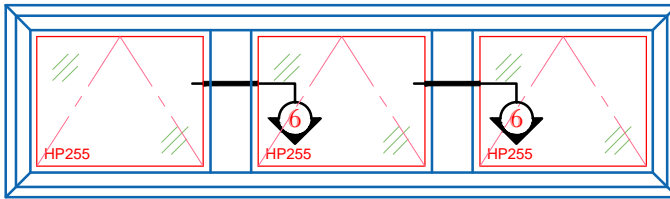
255 HOPPER UP & PICTURE WINDOW 211



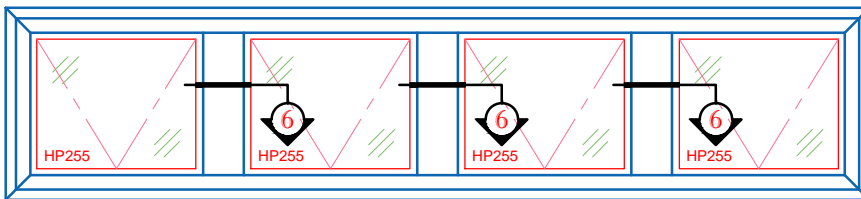
PW211 OVER HP255



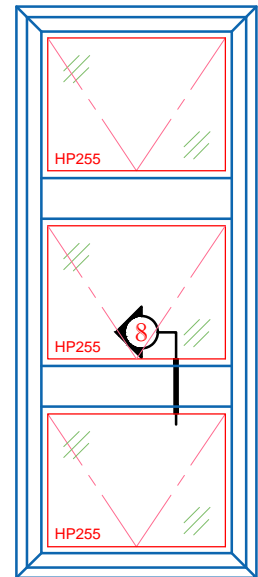
255 HOPPER DOWN WINDOW CONTINUOUS MASTER FRAME - TWO LITE



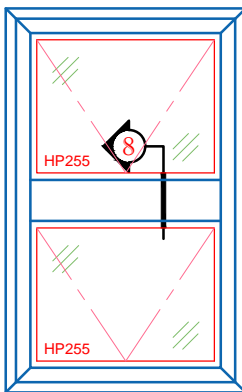
255 HOPPER UP WINDOW CONTINUOUS MASTER FRAME - THREE LITE



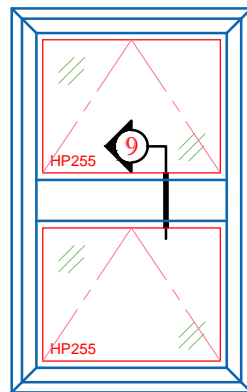
255 HOPPER DOWN (OR UP) WINDOW CONTINUOUS MASTER FRAME FOUR LITE (UP TO FIVE LITE)



255 HOPPER DOWN



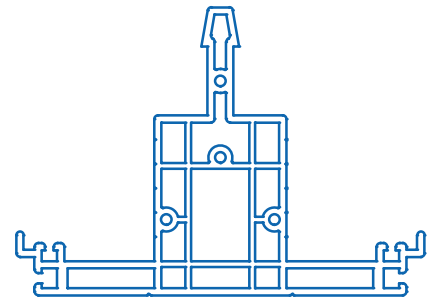
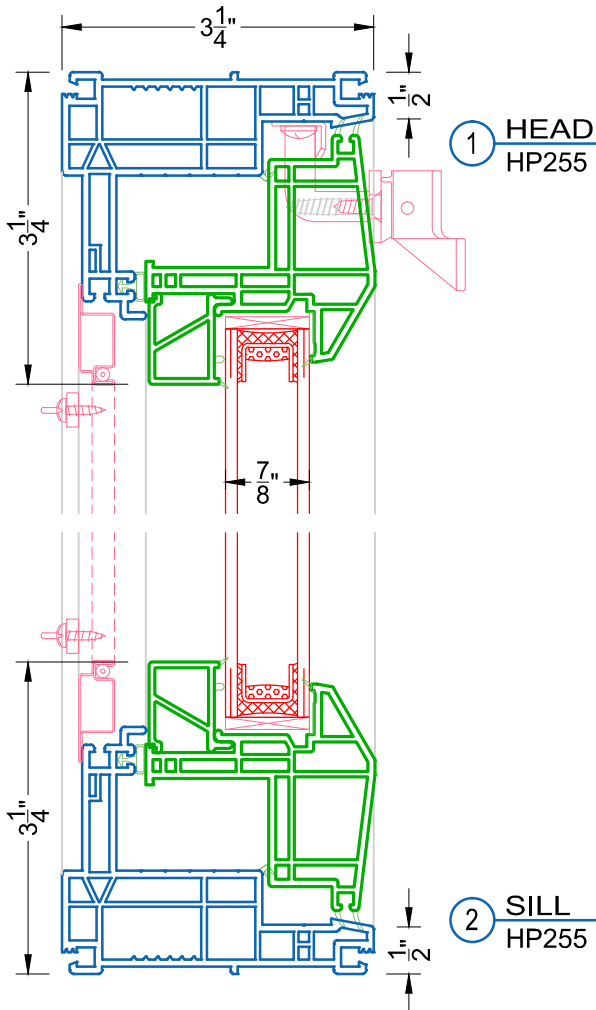
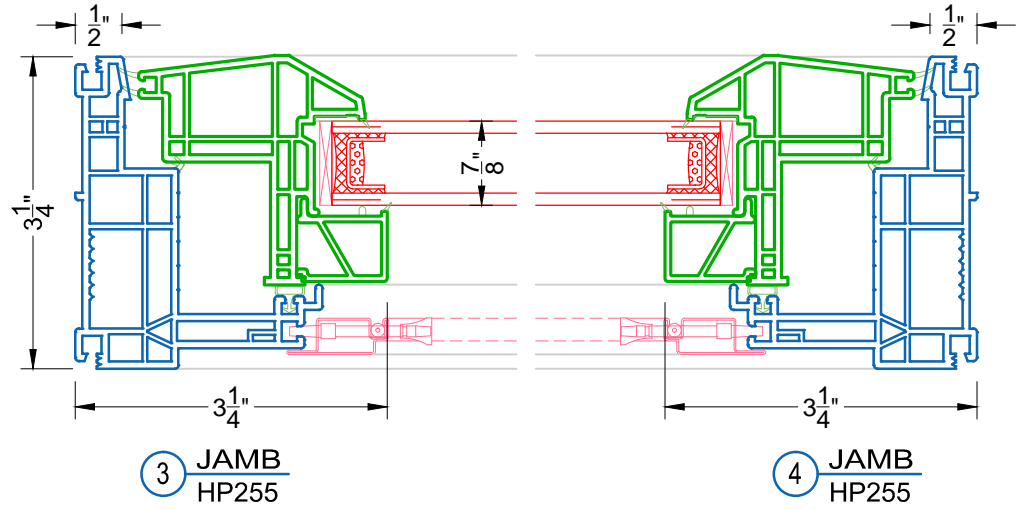
255 HOPPER DOWN



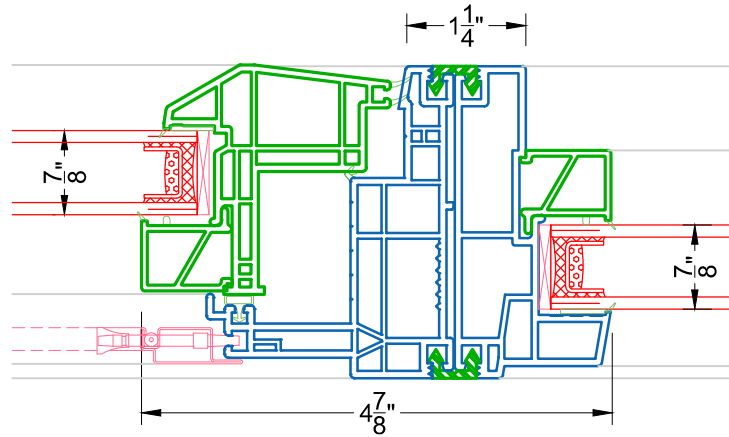
255 HOPPER UP

- FEATURES**
- 3 1/4" FRAME DEPTH
 - 7/8" INSULATED GLASS
 - SOFT COAT LOW-E & ARGON FILLED IGU
 - FUSION WELDED FRAME & SASHES
 - CONTINUOUS POLYETHYLENE RIGID SEAL
 - STRONG MULTI-CHAMBER CONSTRUCTION
 - DESIGNER BEVELED SASH
 - TWO PIECE CAM TURN HANDLE LOCK

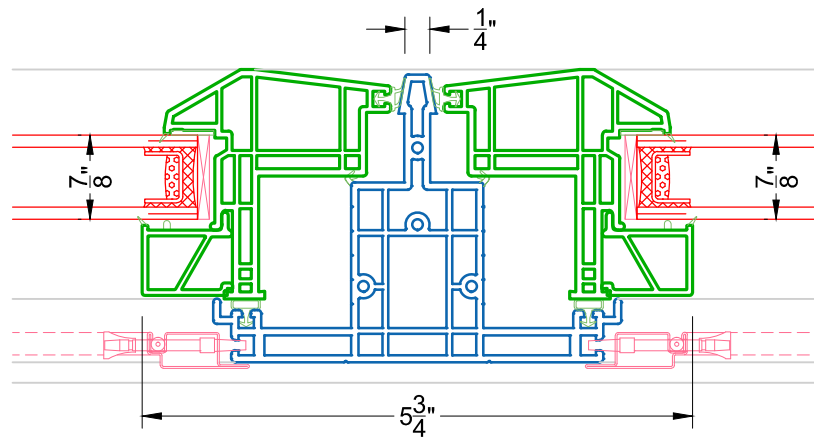
- OPTIONAL**
- TRIPLE-GLAZED INSULATED GLASS UNIT
 - PERFORMA TC™ HIGH PERFORMANCE LOW-E UPGRADE
 - BETWEEN THE GLASS OR EXTERIOR APPLIED GRIDS
 - PAINTED EXTERIOR CUSTOM COLOR
 - EXTRUDED BEIGE COLOR
 - NAILING FIN ATTACHMENT
 - SNAP-ON J-CHANNEL



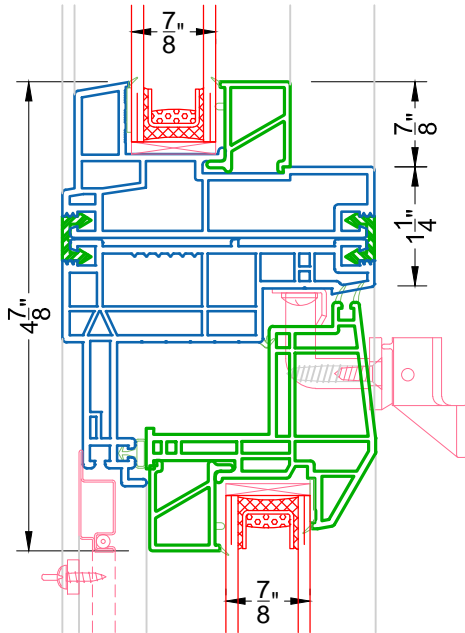
**T JAMB MULLION FOR
 CONTINUOUS MASTER FRAME
 COMBINATIONS
 SEE PAGE 3 & 4**



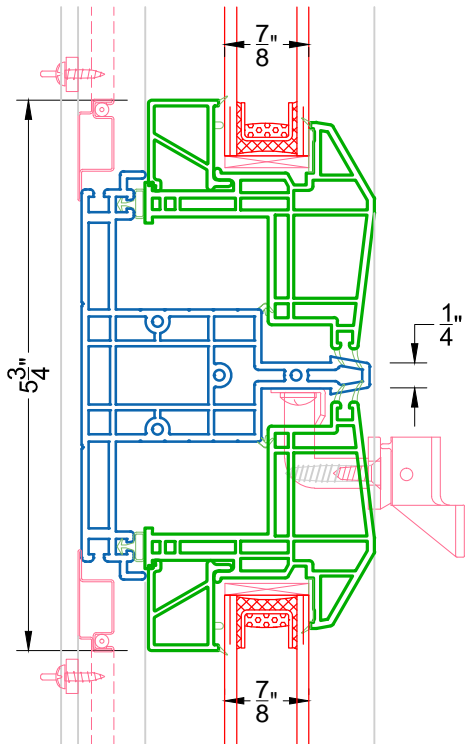
5 0 DEGREE MULLION
 HP255 & PW211



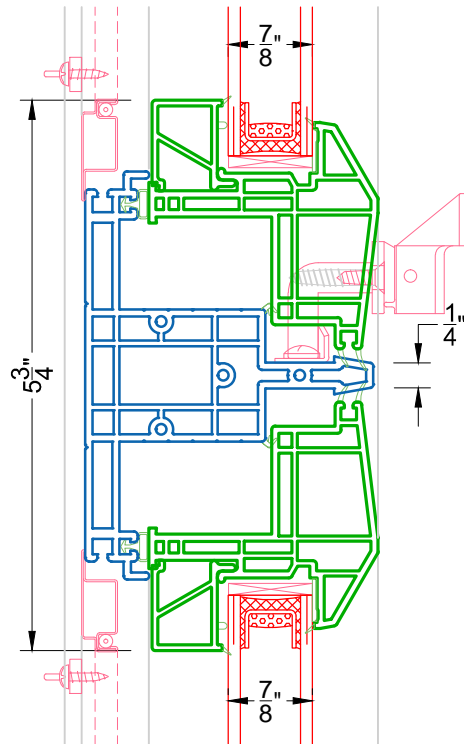
6 T JAMB MULLION
 HP255 & HP255



7 0 DEGREE MULLION
 PW211 OVER CA235



8 T MULLION
 255 HOPPER DOWN



9 T MULLION
 255 HOPPER UP