

**Series 400**



**Features**

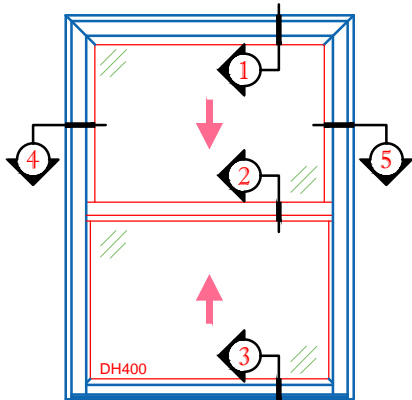
- **Frame Depth = 2<sup>7</sup>/<sub>8</sub>"**
- **Insulated Glass Unit Depth = <sup>7</sup>/<sub>8</sub>"**
- **Soft Coat Low-E & Argon filled IGU**  
*- Maximizes energy efficiency*
- **Constant Force Balances**
- **Tilt Sash** - *For safe, easy cleaning of bottom sash*
- **Full Width Ergonomic Lift Rail**  
*- Comfortable & Easy Operation*
- **Fusion Welded Frame & Sashes**
- **Sloped Sill**
- **Double Seal Weatherstripping**
- **Integral Nailing Fin**
- **Integral J Channel**

**Options**

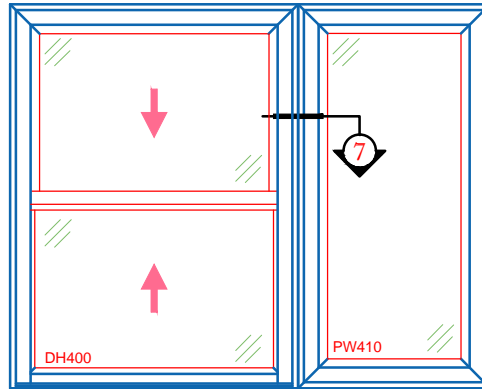
- **Extruded Soft Beige Color**
- **Painted Exterior Custom Color**
- **Triple Glazed Insulated Glass Unit**
- **Performa TC<sup>TM</sup> High Performance Low-E Upgrade**
- **Between the Glass Grids or Exterior Applied Grids**
- **Dual Vent Locks**
- **Spiral / Block & Tackle Balances**
- **Architectural Shapes**



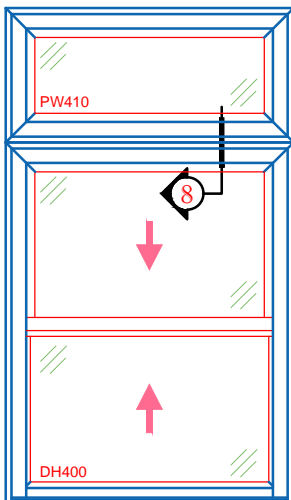
PRODUCT SPECS	SERIES	STYLES	FRAME DEPTH	IG DEPTH	AAMA	ENERGY STAR	ENHANCED W/ PERFORMA TC <sup>TM</sup> GLASS PACKAGE
	400	Double Hung Tilt	2 <sup>7</sup> / <sub>8</sub> "	<sup>7</sup> / <sub>8</sub> "	R30	0.32	0.25



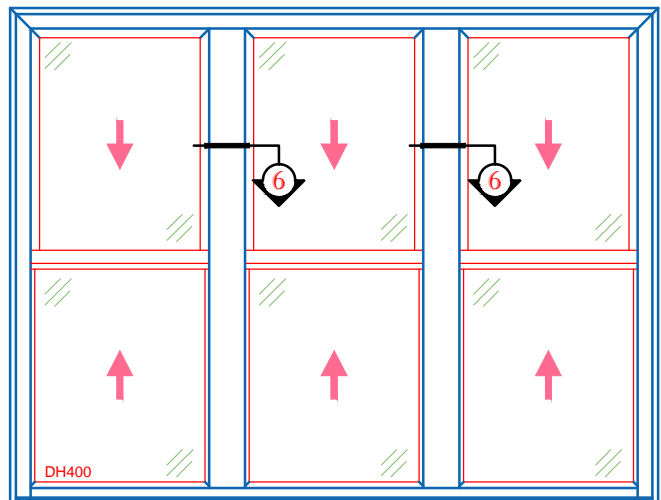
**400 DOUBLE HUNG**



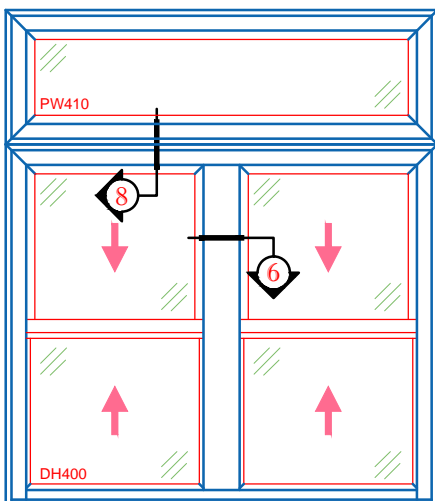
**400 DOUBLE HUNG W/ PICTURE WINDOW**



**PICTURE WINDOW OVER  
 DH 400**



**3 UNITS DH 400 W/ CONTINUOUS HEAD & SILL**



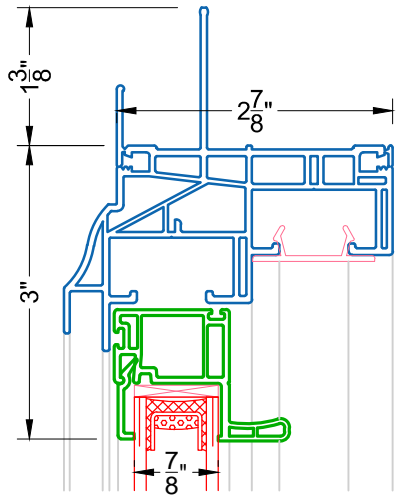
**PICTURE WINDOW OVER  
 2 UNITS DH 400**

**FEATURES**

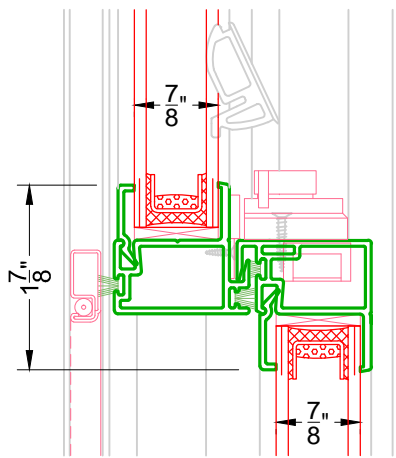
- 2 7/8" FRAME DEPTH
- 7/8" INSULATED GLASS
- SOFT COAT LOW-E & ARGON FILLED IGU
- CONSTANT FORCE BALANCES
- TILT SASHES
- FULL WIDTH ERGONOMIC LIFT RAIL
- FUSION WELDED FRAME & SASHES
- SLOPED SILL
- DOUBLE-SEAL WEATHERSTRIPPING
- INTEGRAL NAILING FIN
- INTEGRAL J-CHANNEL

**OPTIONAL**

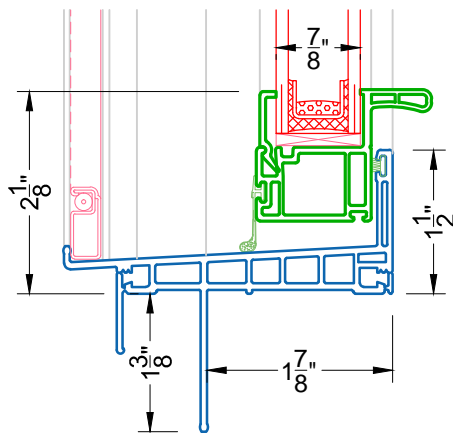
- TRIPLE-GLAZED INSULATED GLASS UNIT
- PERFORMA TC<sup>TM</sup> HIGH PERFORMANCE LOW-E UPGRADE
- BETWEEN THE GLASS OR EXTERIOR APPLIED GRIDS
- SPIRAL / BLOCK & TACKLE BALANCES
- ARCHITECTURAL SHAPES
- DUAL VENT LOCKS
- PAINTED EXTERIOR CUSTOM COLOR
- EXTRUDED SOFT BEIGE COLOR



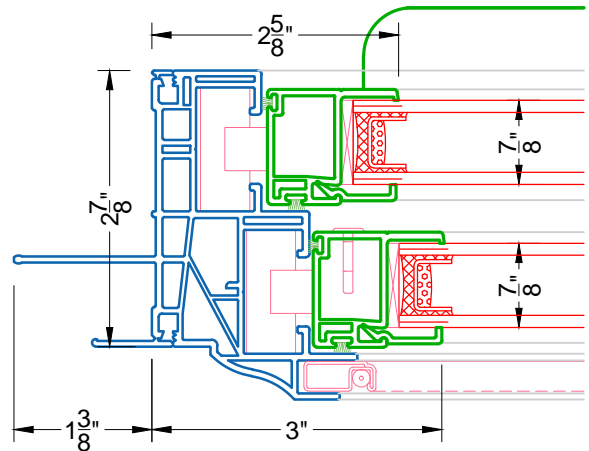
1 STANDARD HEAD  
 DH 400



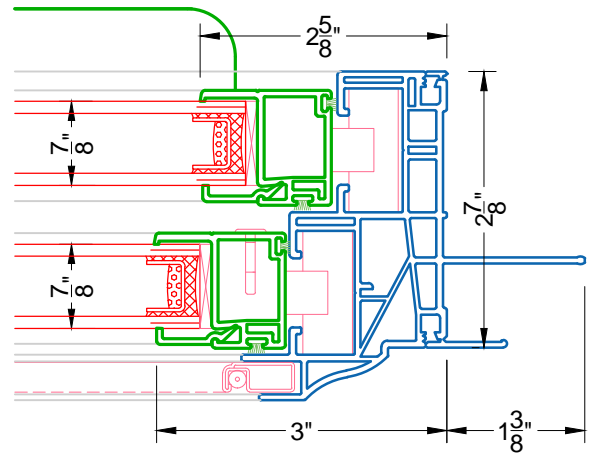
2 MEETING RAIL  
 DH 400



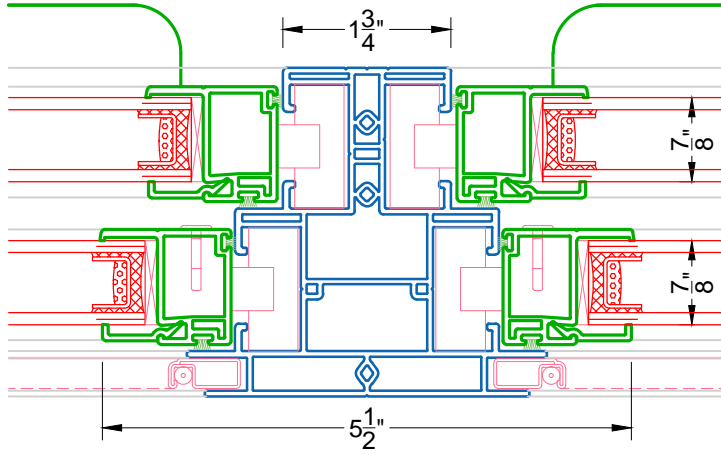
3 STANDARD SILL  
 DH 400



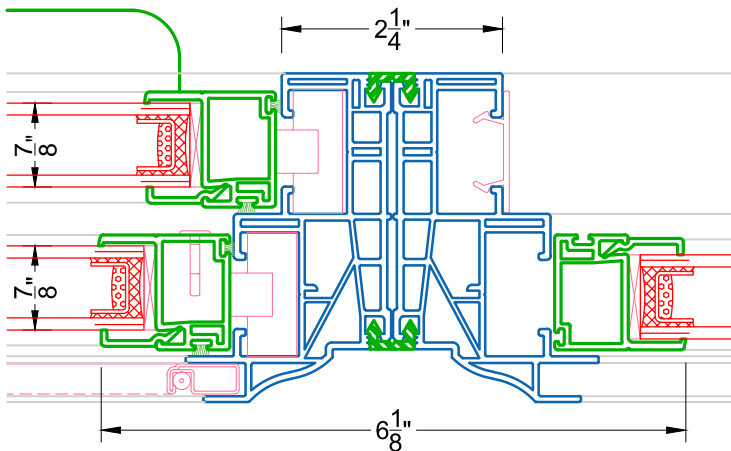
4 STANDARD JAMB  
 DH 400



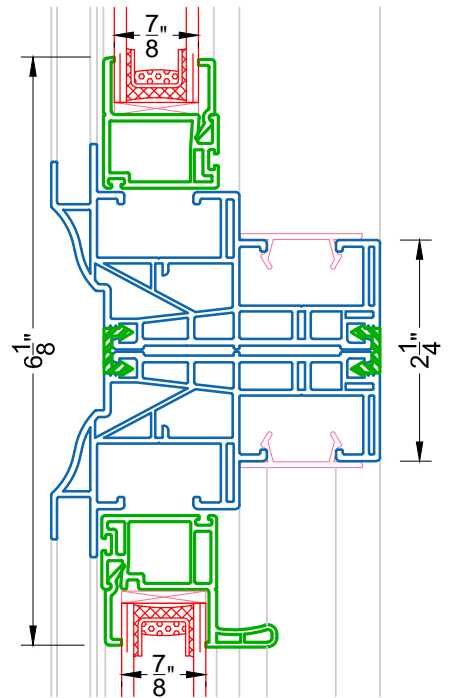
5 STANDARD JAMB  
 DH 400



6 T CENTRAL JAMB  
 DH 400



7 0 DEGREE MULLION  
 DH 400 & PW



8 0 DEGREE MULLION  
 PW OVER DH 400