

Series 500



Features

- **Frame Depth = 3 1/4"**
- **Insulated Glass Unit Depth = 7/8"**
- **Soft Coat Low-E & Argon filled IGU**
 - *Maximizes energy efficiency*
- **Constant Force Balances**
- **Tilt Sash** - *For safe, easy cleaning of bottom sash*
- **Full Width Ergonomic Lift Rail**
 - *Comfortable & Easy Operation*
- **Fusion Welded Frame & Sashes**
- **Sloped Sill**
- **Double Seal Weatherstripping**
- **Dual Vent Locks**

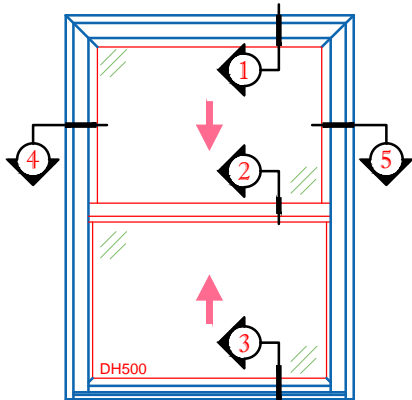
Options

- **Triple Glazed Insulated Glass Unit**
- **Performa TC™ High Performance Low-E Upgrade**
- **Between the Glass Grids or Exterior Applied Grids**
- **Duralite® Spacer**
- **Spiral / Block & Tackle Balances**
- **Architectural Shapes**

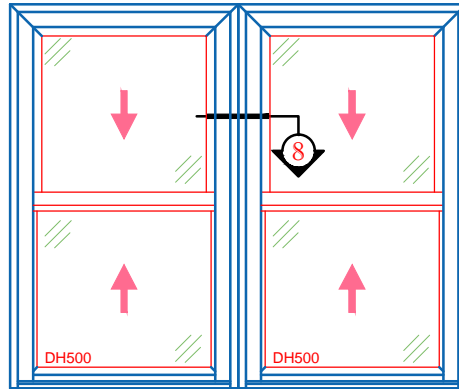
PRODUCT SPECS

SERIES	STYLES	FRAME DEPTH	IG DEPTH	AAMA	ENERGY STAR	ENHANCED W/ PERFORMA TC™ GLASS PACKAGE
500	Double Hung Tilt	3 1/4"	7/8"	R35	0.32	0.29

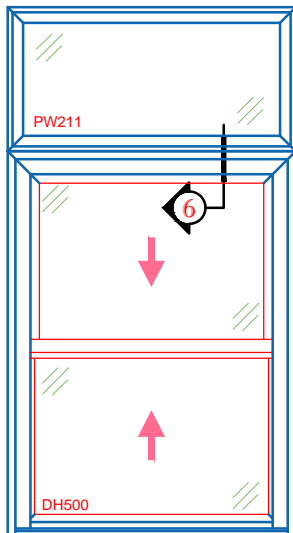




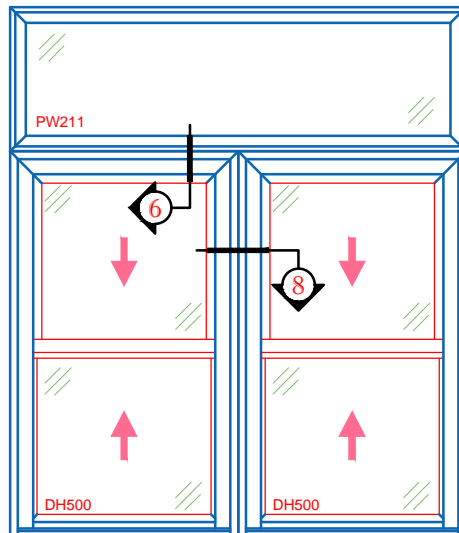
500 DOUBLE HUNG



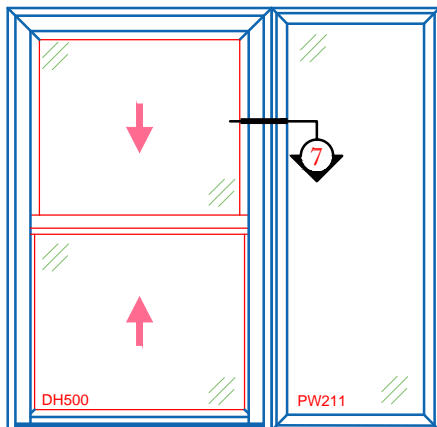
500 DOUBLE HUNG W/ H MULLION



**PICTURE WINDOW OVER
 DH 500**



PICTURE WINDOW OVER DH 500



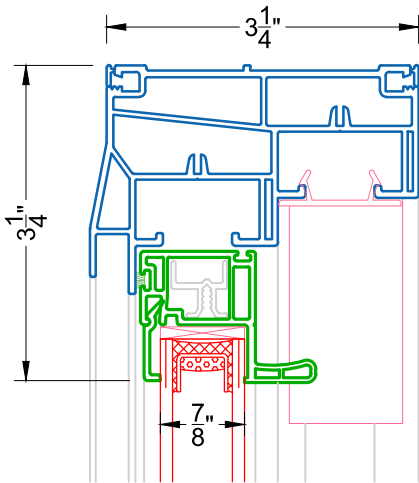
**500 DOUBLE HUNG
 W/ PICTURE WINDOW**

FEATURES

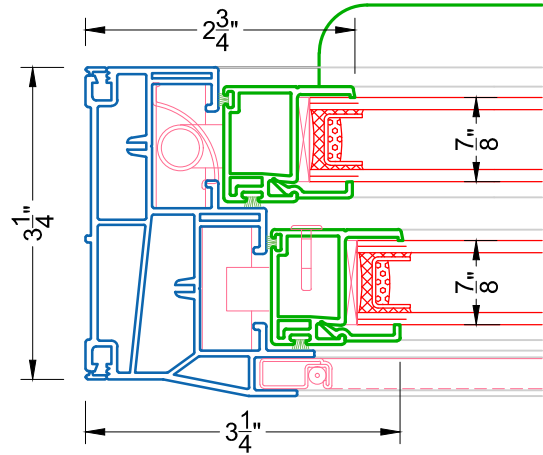
- 3 1/4" FRAME DEPTH
- 7/8" INSULATED GLASS
- SOFT COAT LOW-E & ARGON FILLED IGU
- CONSTANT FORCE BALANCES
- TILT SASHES
- FULL WIDTH ERGONOMIC LIFT RAIL
- FUSION WELDED FRAME & SASHES
- SLOPED SILL
- DOUBLE-SEAL WEATHERSTRIPPING
- DUAL VENT LOCKS

OPTIONAL

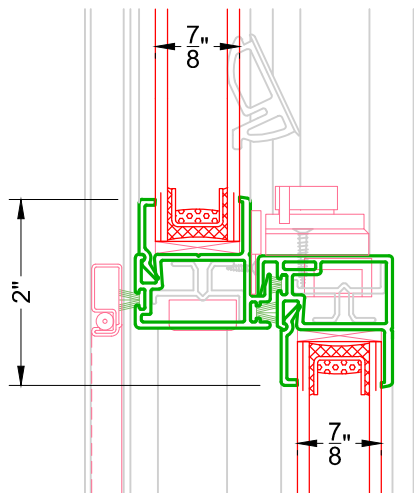
- TRIPLE-GLAZED INSULATED GLASS UNIT
- PERFORMA TC™ HIGH PERFORMANCE LOW-E UPGRADE
- BETWEEN THE GLASS OR EXTERIOR APPLIED GRIDS
- SPIRAL / BLOCK & TACKLE BALANCES
- ARCHITECTURAL SHAPES
- DURALITE® SPACER



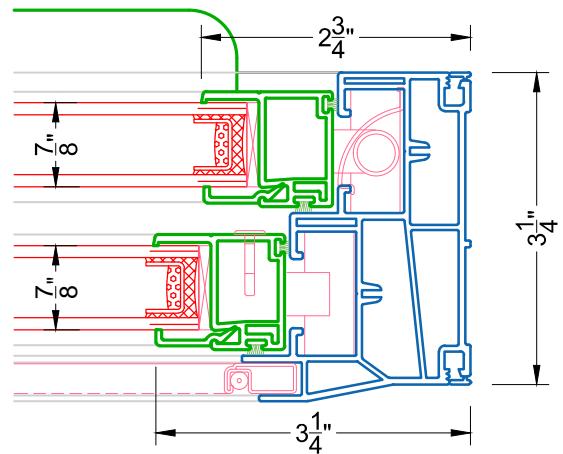
1 STANDARD HEAD
 DH 500



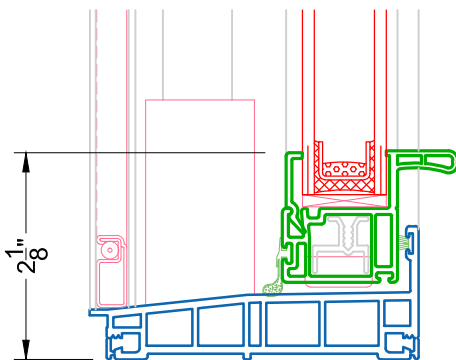
4 STANDARD JAMB
 DH 500



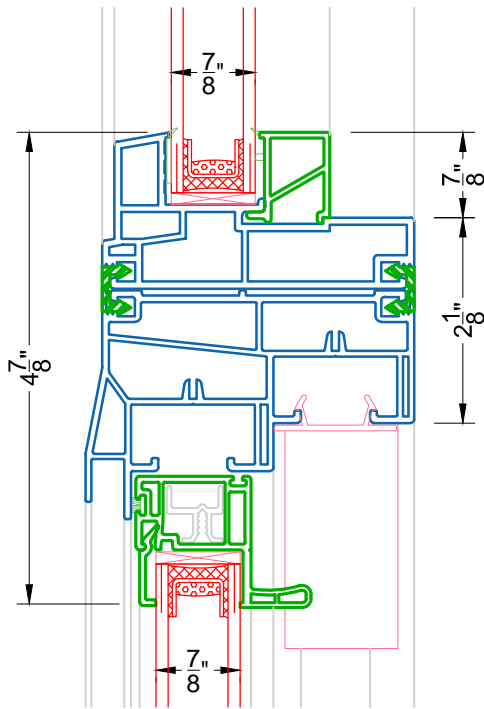
2 MEETING RAIL
 DH 500



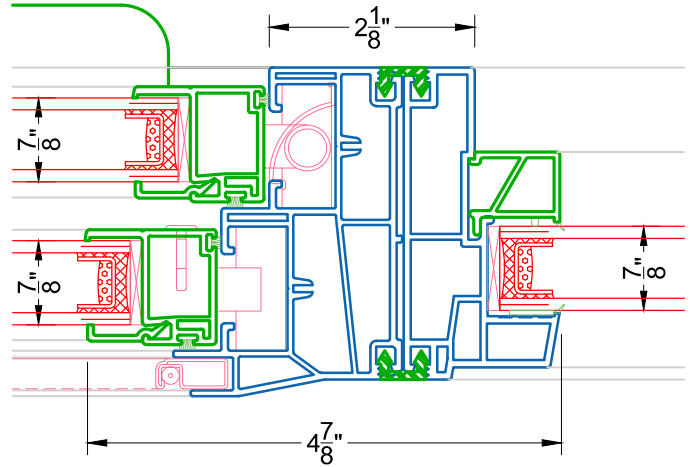
5 STANDARD JAMB
 DH 500



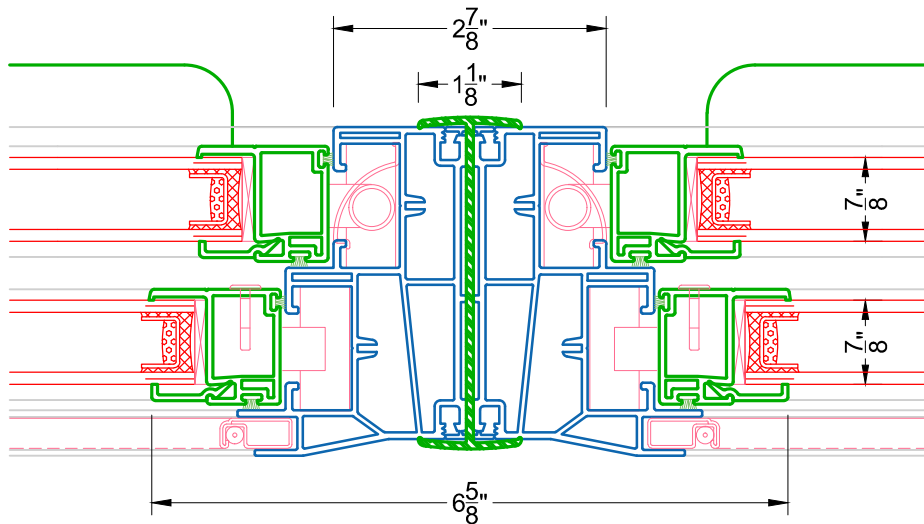
3 STANDARD SILL
 DH 500



⑥ 0 DEGREE MULLION
 PW OVER DH 500



⑦ 0 DEGREE MULLION
 DH 500 & PW



⑧ H MULLION
 DH 500 & DH 500