

INSTALLATION GUIDE

3 PIECE MULLION



CRYSTAL WINDOW & DOOR SYSTEMS
31-10 WHITESTONE EXPWY. FLUSHING NY 11354
TEL. 718.961.7300

VER 09.03.24

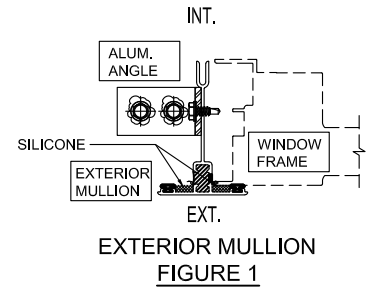
PAGE 1 OF 1

1. PREPARATION FOR 3 PIECE MULLION INSTALLATION

Determine the exact location of the mullions (typically at the center of in-between windows). Install first window as per Crystal installation guide.

2. EXTERIOR MULLION INSTALLATION

Back seal exterior mullion in silicone prior to installation (See figure #1). Secure the exterior mullion with $1 \frac{3}{4}$ " X $2 \frac{1}{2}$ " X $\frac{1}{8}$ " thick alum. angle clip at head and sill ($1 \frac{3}{4}$ " side of angle set firm against rough opening) with (2) stainless steel fasteners into the rough opening (min. $\frac{1}{2}$ " embedment) and (2) #12-14 x $\frac{5}{8}$ " hex head stainless steel screws to the mullion (See figure 1, 2, and 3). Seal all fastener heads with silicone.

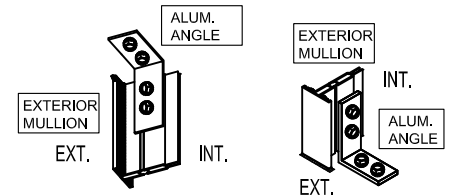


EXTERIOR MULLION
FIGURE 1

3. INTERIOR MULLION CLIP (PRESSURE PLATE) INSTALLATION

Install the next window in sequence as per Crystal installation guide.

Back seal interior mullion clip in silicone prior to installation (See figure #4). Install the mullion clip into the exterior mullion and use #10-16 x $\frac{3}{4}$ " pan head screws at 12" O.C. max. to hold it in place. Secure the mullion clip to the window frame using #8-16 x $\frac{3}{4}$ " flat (or pan) head screws at 16" O.C. max. (See figure #4).

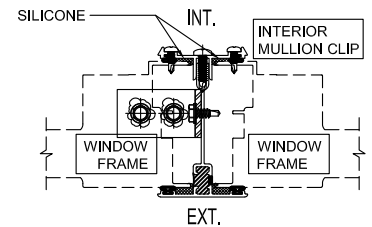


HEAD END
FIGURE 2

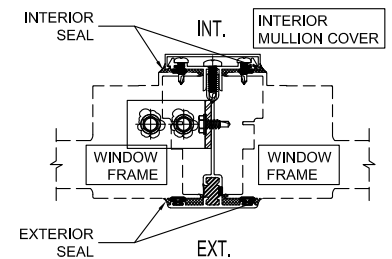
SILL END
FIGURE 3

4. INTERIOR MULLION COVER INSTALLATION

Snap in the mullion cover onto the mullion clip (See figure #5). Provide interior and exterior perimeter seal between the window frame, interior mullion cover, and exterior mullion (See figure #2, 3, and 5).



INTERIOR MULLION CLIP
FIGURE 4



INTERIOR MULLION COVER
FIGURE 5