



CRAFTED WITH PASSION. BUILT TO PERFORM.

## Greenpoint Landing – Brooklyn, NY

### New Construction



***1,816 uPVC Commercial Vinyl Windows***

### Project Highlights

Crystal supplied 1,816 MAGNUS Series 4500 uPVC commercial vinyl in-swing casement and fixed windows. Located at 35 Commercial Street, Brooklyn, NY, the 213-foot tall 344,000-ft<sup>2</sup> structure consists of a 22-story tower atop a 6-story podium base building.

To provide expansive views, many of the building openings (some as large as 7-¼ feet wide x 10-½ feet tall) featured both fixed and casement windows combined using one master frame. A unique architectural feature of the project was the use of ribbon wall windows on both the base building and the high-rise tower. Crystal was selected for this project in part because of its design expertise and experience with ribbon wall window fabrication and installation. The continuous ribbon windows were joined together using Crystal mullion systems.

Situated along the Brooklyn waterfront, 35 Commercial Street is part of a multi-building major development, Greenpoint Landing, revitalizing the formerly blighted area with a vibrant new community. With a red brick façade and entrance archway, 35 Commercial Street echoes the neighborhood's former industrial past and adds a traditional contrast aesthetic to the surrounding new glass and metal structures. The massive building occupies much of a city block and provides 374 affordable housing apartments, many resident amenities, and 7,600-ft<sup>2</sup> of ground floor retail.

CRAFTED WITH PASSION. BUILT TO PERFORM.



## 1,816 uPVC Commercial Vinyl Windows

### Project Partners

<b>Architect:</b>	Handel Architects, New York, NY
<b>General Contractor:</b>	Monadnock Construction, Brooklyn, NY
<b>Fenestration Installer:</b>	Adler Windows, Jamaica, Queens, NY
<b>Developers:</b>	Park Tower Group / Greenpoint Landing Associates, New York, NY



### Products and Services

#### MAGNUS Series 4500 uPVC Casement and Fixed Windows

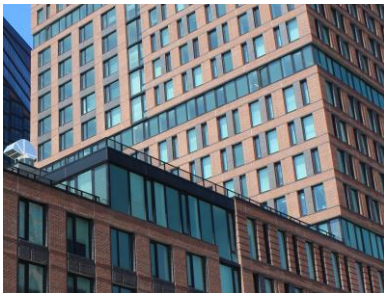
- Insulated, multi-chamber 2-5/8" depth uPVC frame
- AAMA AW-70
- Multi-point locks and sash perimeter compression seal technology
- Opening limit safety devices
- Top quality European-styled hardware

#### Insulated Glass Units

- 1-5/16" dual-pane insulated glass units
- Cardinal LoE<sup>3</sup>-366 glass coating
- Argon gas filling
- Select tempered, charcoal color spandrel glass

#### Finish and Accessories

- Two-tone finish: extruded white interior and durable Renolit black foil exterior
- Factory-installed Titon trickle ventilators on operating windows
- Aluminum receptors, subsills, anchor straps, 3-piece and corner mullions
- Accessories finished in two-tone white interior and black exterior



Contact Crystal at 800-472-9988 or [www.crystalwindows.com](http://www.crystalwindows.com) today and learn how we can transform your next project into a beautiful built reality.