



CRAFTED WITH PASSION. BUILT TO PERFORM.

## VOCO Hotel Times Square – New York, NY

New Construction

### Project Highlights

Guests at the VOCO Hotel Times Square enjoy fantastic floor-to-ceiling views with Crystal Series W50i window wall. The 32-story L-shaped high-rise hotel, located at 711 7<sup>th</sup> Avenue near Manhattan’s famous Times Square, features over 31,000 sq. ft. of Crystal’s W50i Window Wall system on its west and north facing glass facades. The window wall system includes operable casement window panels, minimal sightlines, superior energy efficiency, and bird-friendly glass. Window wall framing featured custom color two-tone finish and spandrel panels were painted a complementary custom color.

Fully installed from within the building’s interior, with floor-to-ceiling glass and a slab bypass option, unitized Crystal glass window wall replicates the look and function of curtain wall with the benefits of easier handling, faster and safer installations, less on-site labor requirements, enhanced thermal performance, outstanding aesthetics, and greater cost effectiveness.

The VOCO Hotel Times Square has 422 guest rooms, conference rooms, and 7,500 sq. ft. set aside for restaurant and bar space, including a rooftop indoor/outdoor bar. A distinct feature of the hotel’s Seventh Avenue façade, the cantilevered top floor balcony sports the VOCO name emblazoned across the underside, plainly visible to the street below.



**31,466 ft<sup>2</sup> window wall**  
**392 operable window panels**



CRAFTED WITH PASSION. BUILT TO PERFORM.

## Project Partners

### Developer:

Atlas Hospitality, Albertson, NY

### Architect:

Gene Kaufman Architects, New York, NY

### General Contractor:

Flintlock Construction, New York, NY

### Fenestration Installer:

Vista Skywall Systems, Queens, NY

## Products and Services

### Series W50i Window Wall

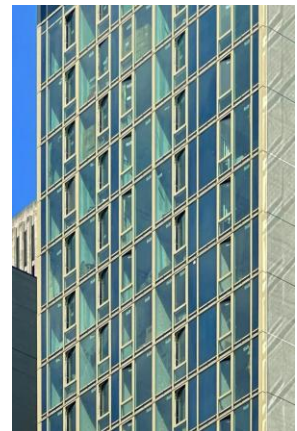
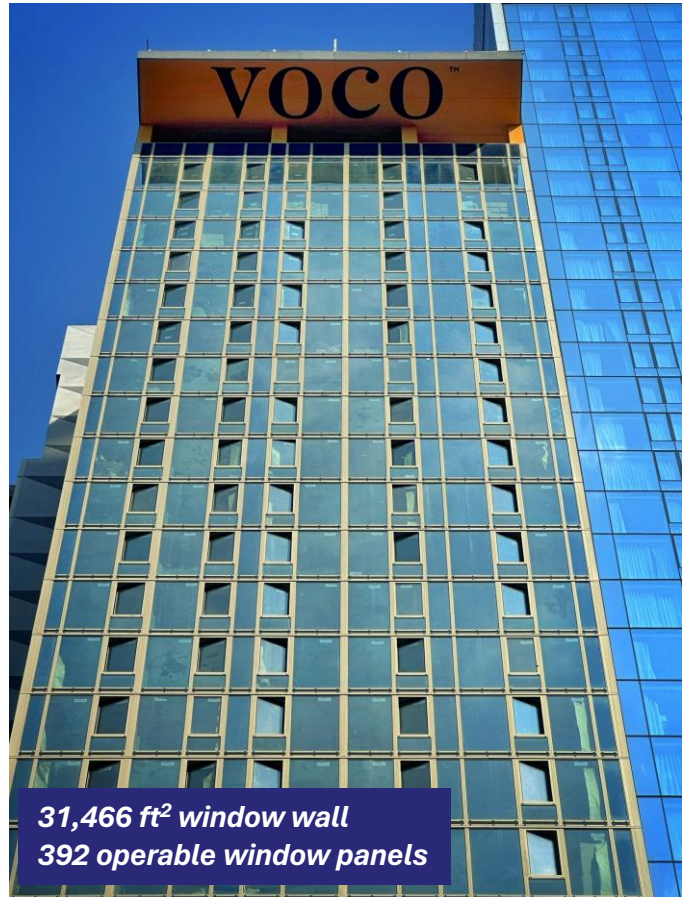
- 31,466-ft<sup>2</sup> glass window wall
- 392 operable in-swing casement window panels
- 2-½" sightlines, 5" frame depth
- AW-PG70 and AW-PG55
- Slab by-pass spandrel insulated panels

### Insulated Glass Units

- 1" (fixed) and 1-¼" (operable) dual-pane units
- Technoform spacers
- Guardian SN68 tempered glass with low-E coating and argon gas filling
- Bird-friendly patterned glass
- Non-bypass spandrel glass, tempered and backpainted custom Ford Blue
- Slab by-pass panels single-pane ¼" monolithic tempered glass, custom Ford Blue on interior facing surface

### Finish and Accessories

- Custom two-tone powder coat finish in Timeless Gold (exterior) and white (interior)
- Receptors, subsills, anchor clips, snap trim
- Operating windows include opening limit devices



Contact Crystal at 800-472-9988 or [www.crystalwindows.com](http://www.crystalwindows.com) today and learn how we can transform your next project into a beautiful built reality.